

GROUND FLOOR RETAIL AVAILABLE

820 DAVIS STREET

SHERMAN AVENUE & DAVIS AVENUE | EVANSTON, ILLINOIS



A·R·C
REAL ESTATE

820 DAVIS STREET

Downtown | Evanston, IL



GROUND FLOOR SPACE AVAILABLE

2,624 SF

SITE SUMMARY

- 33 feet of frontage at the base of a 86,000 RSF office building with new ownership, recently completed large scale renovation
- Black iron capable
- Centrally located in downtown Evanston home to world-renowned Northwestern University, with 20,000 students and 10,000 staff and faculty
- Steps to CTA and Metra Rail stations, serving 1.2 million riders to and from Chicago and affluent North Shore suburbs
- 1,500+ public parking spaces directly across Davis at Sherman Plaza
- 1,500 luxury residential units currently under development, adding to nearly 1,000 units delivered in the last 5 years

JOIN NEIGHBORING TENANTS



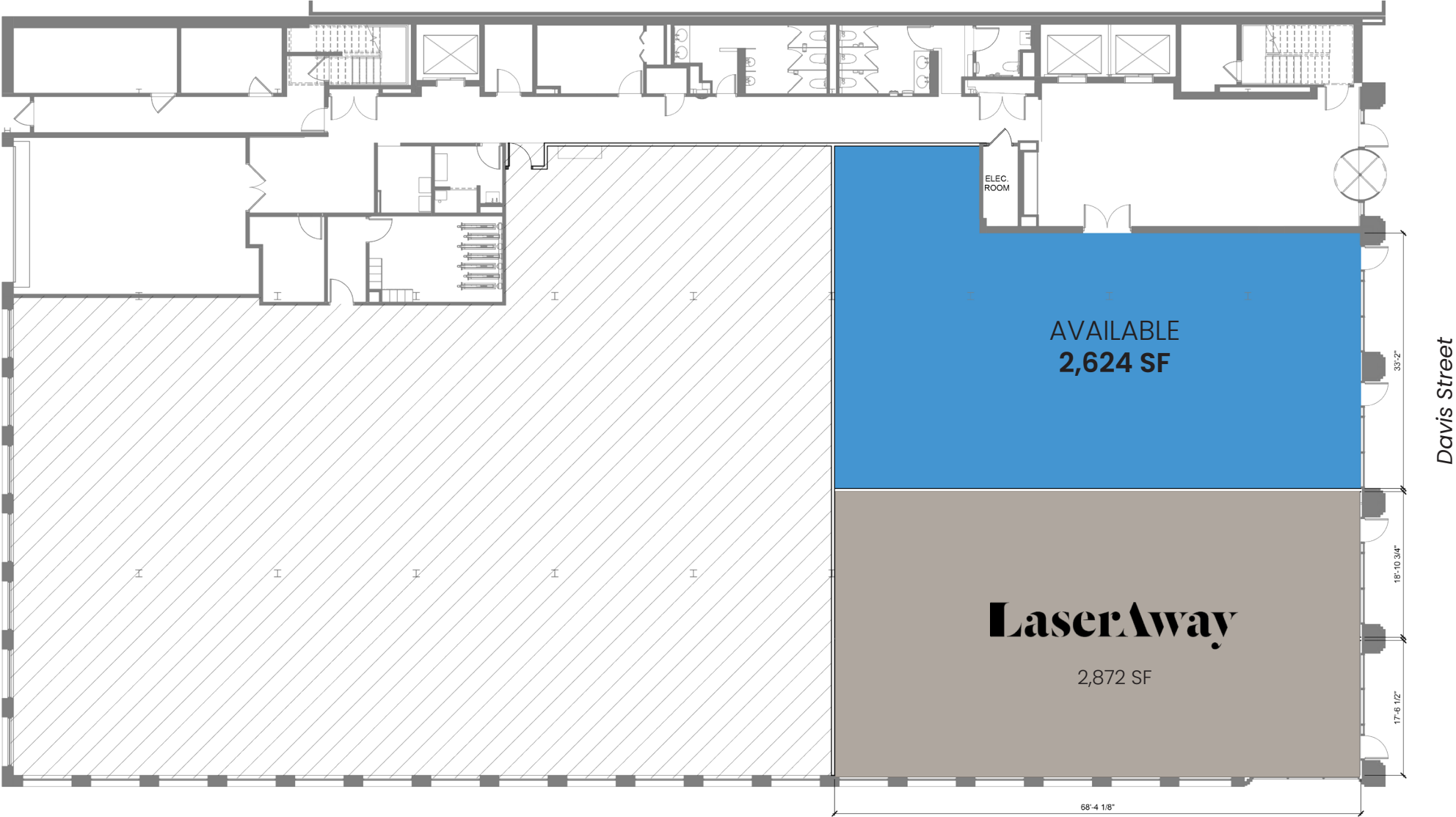
DEMOGRAPHICS

	1/2 Mile	1 Mile	3 Miles	5 Miles
Total Population	15,277	34,467	181,027	434,534
Full Time Employees	23,146	47,150	182,565	199,064
Average HH Income	\$163,782	\$167,355	\$159,971	\$99,371

EVANSTON RETAIL SPACE AVAILABLE

820 DAVIS STREET

Downtown | Evanston, IL



820 DAVIS STREET

Downtown | Evanston, IL



CONTACT

MATT CAVANAGH
matt@arcgrp.com
630.908.5694

LAUREN SZYMELL
lszymell@arcgrp.com
630.908.5703

JEANNE ELLIOTT
jeanne@arcgrp.com
630.908.5696

ARC Real Estate
700 Commerce Drive, Suite 110
Oak Brook, IL 60523
www.arcgrp.com
630.908.5700

© 2022 ARC Real Estate. All information is from sources believed reliable, not independently verified, and thus subject to errors, omissions, and modifications such as price, listing, square footage, rates and commissions. All information, estimates and projections subject to change, market assumptions, unknown facts and conditions, and future potentialities. ARC Real Estate makes no express or implied representations or warranties, as facts and results may vary materially from all information, estimates and projections. All renderings presented are conceptual.