

FORMER OFFICE/RETAIL SPACE AVAILABLE

1300 NORTH ASHLAND

NWC Milwaukee & Ashland | Wicker Park, Chicago



FORMER OFFICE/RETAIL SPACE AVAILABLE

1300 N. ASHLAND AVENUE

NWC Milwaukee & Ashland, Wicker Park | Chicago, IL



SPACE AVAILABLE

1,566 SF Sublease

SITE SUMMARY

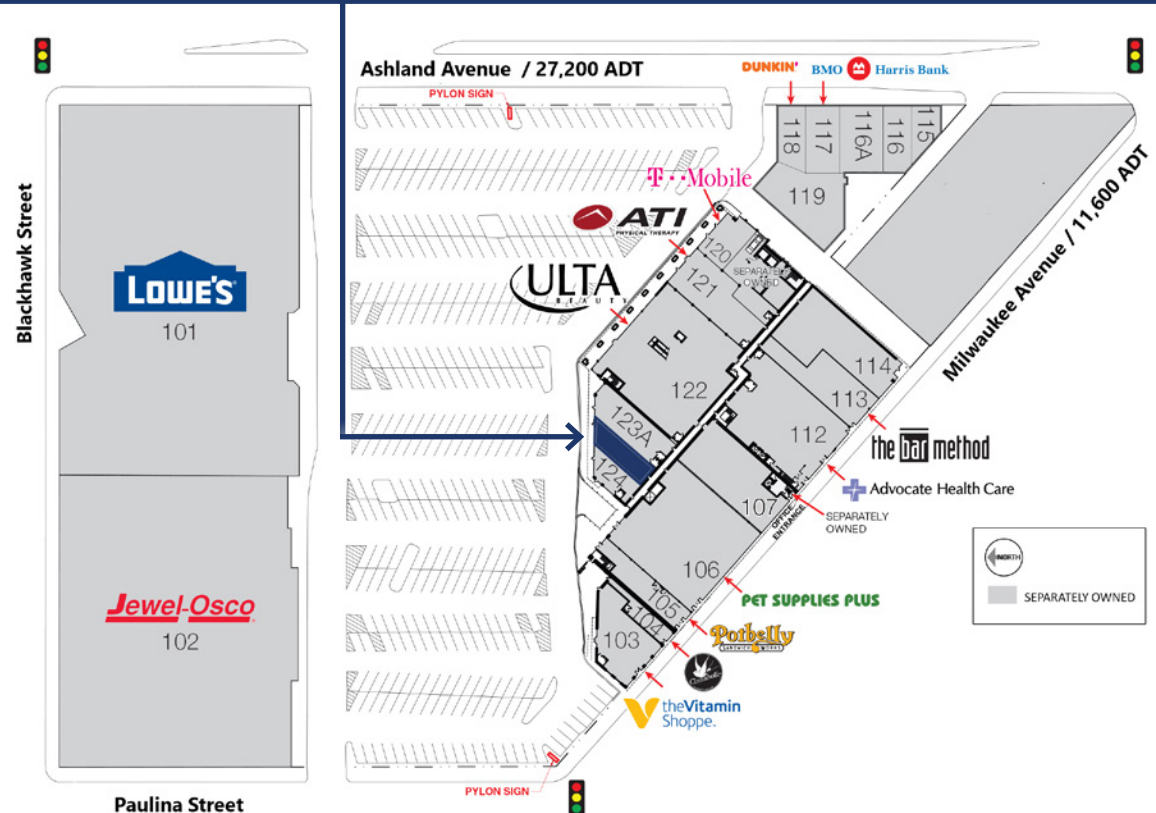
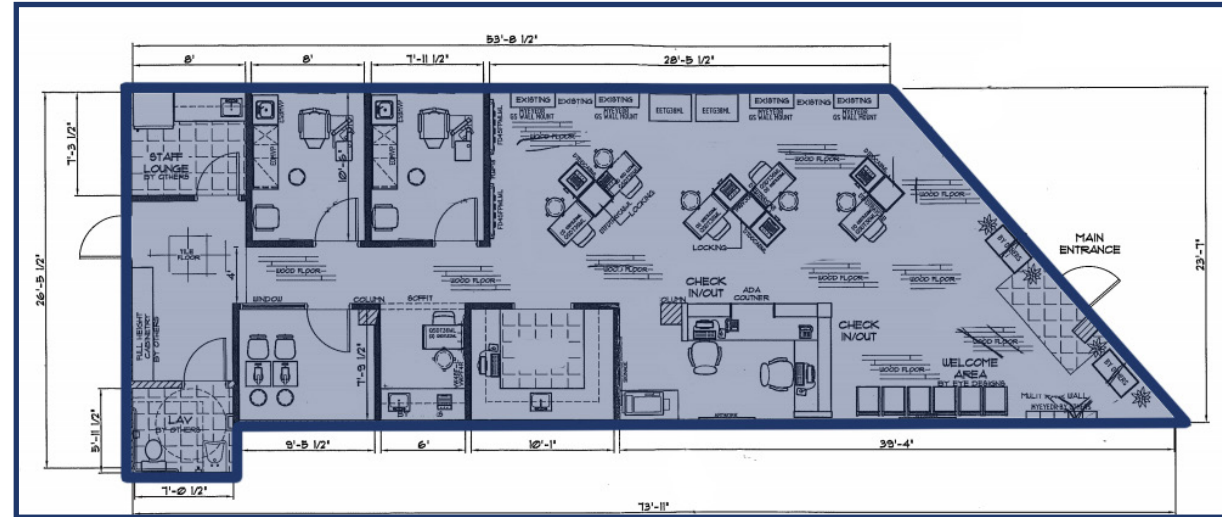
- Lease term thru 2027
- Former office space in near move-in ready condition
- Pylon signage available
- Steps to CTA Division Blue Line Station
- 2 exam rooms, office, break room
- New buildout completed in 2017

CO-TENANTS



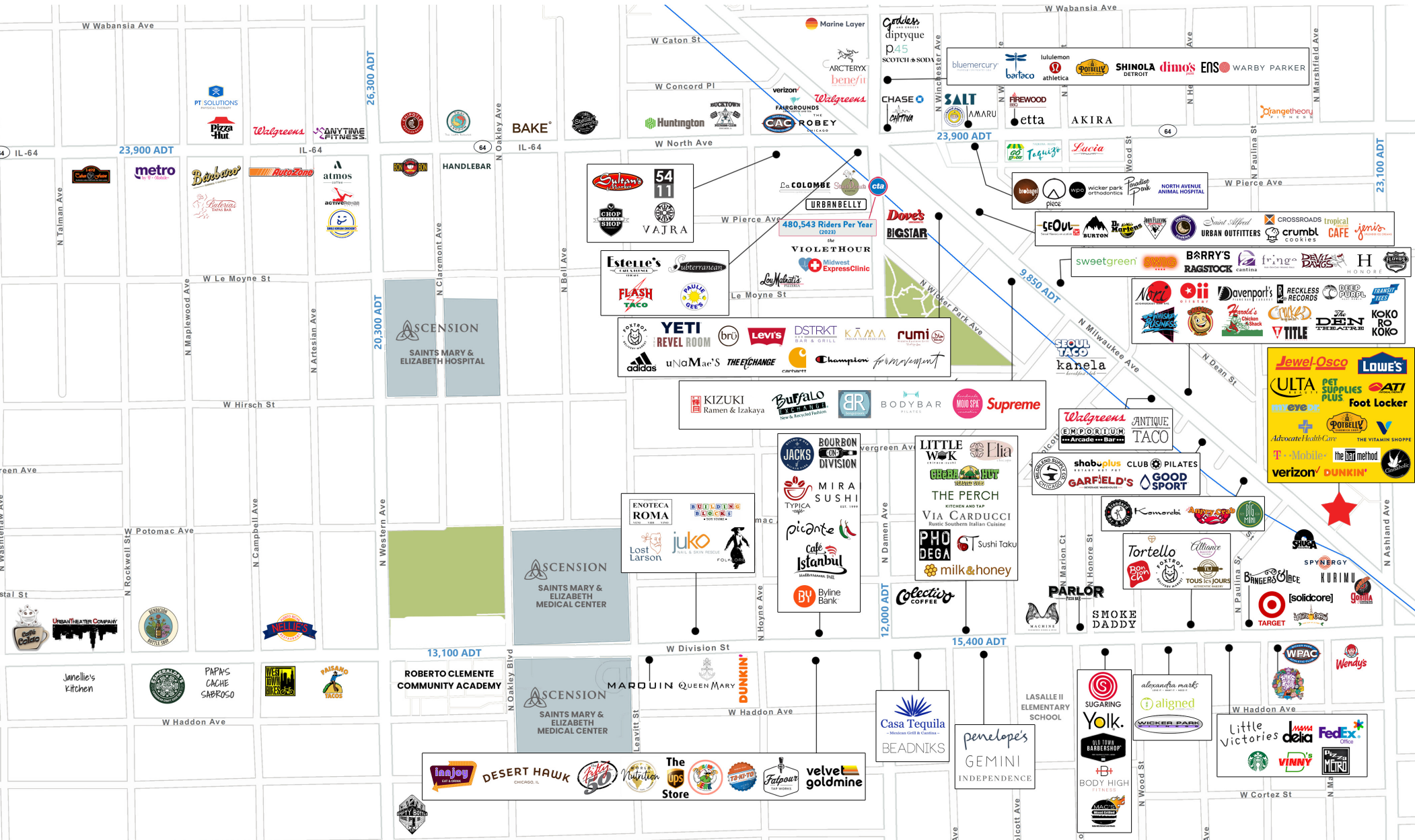
DEMOGRAPHICS

	1/2 Mile	1 Mile	2 Miles
Total Population	16,821	52,021	230,356
Average HH Income	\$105,117	\$109,320	\$114,502
Daytime Population	6,476	27,985	123,395



FORMER OFFICE/RETAIL SPACE AVAILABLE
1300 N. ASHLAND AVENUE

NWC Milwaukee & Ashland, Wicker Park | Chicago, IL



MATT CAVANAGH
 matt@arcgrp.com
 630.908.5694

LAUREN SZYMELL
 lszymell@arcgrp.com
 630.908.5703

© 2022 ARC Real Estate. All information is from sources believed reliable, not independently verified, and thus subject to errors, omissions, and modifications such as price, listing, square footage, rates and commissions. All information, estimates and projections subject to change, market assumptions, unknown facts and conditions, and future potentialities. ARC Real Estate makes no express or implied representations or warranties, as facts and results may vary materially from all information, estimates and projections. All renderings presented are conceptual.

