

UNIQUE LOGAN SQUARE RETAIL/OFFICE OPPORTUNITY

2740 NORTH KEDZIE

Logan Square | Chicago, IL



2740 NORTH KEDZIE

Logan Square | Chicago, IL

SPACE AVAILABLE

15,600 SF

SITE SUMMARY

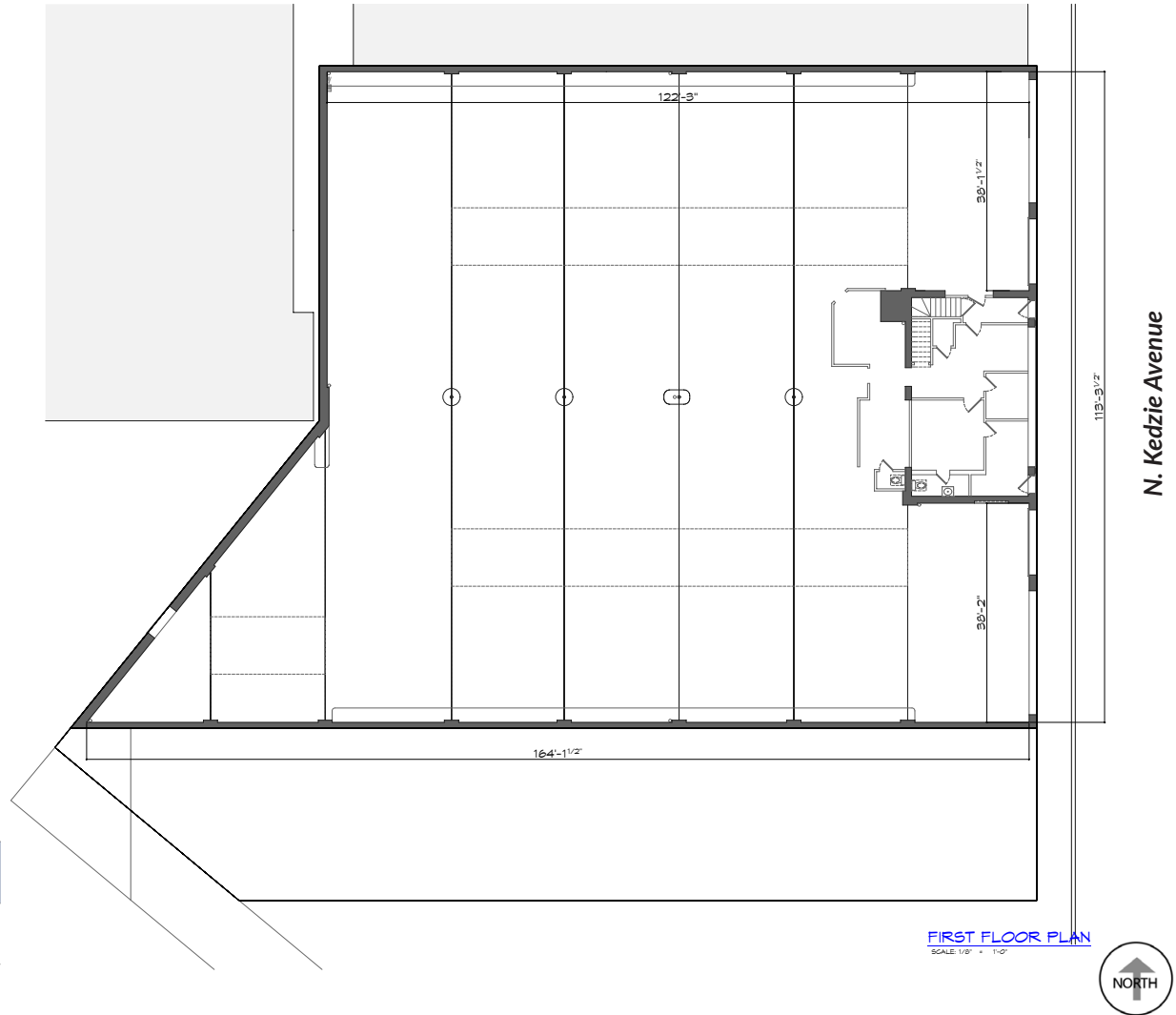
- Double Bow Truss Building
- Up to 113' frontage to Kedzie
- Unique Opportunity for Brewery, Education, Fitness, Office, Co-Working, Pet Care
- 500 feet to CTA Logan Square Station
- Easy access to Kennedy Expressway
- Adjacent land available for parking or patio use

AREA TENANTS



DEMOGRAPHICS

	0.5 MILE	1 MILE	2 MILES
Total Population	18,782	67,931	239,187
Average HH Income	\$133,345	\$136,487	\$150,792
Daytime Population	11,850	45,791	175,626



UNIQUE LOGAN SQUARE RETAIL/OFFICE OPPORTUNITY

2740 NORTH KEDZIE

Logan Square | Chicago, IL

A·R·C
REAL ESTATE



2740 NORTH KEDZIE

Logan Square | Chicago, IL



FOR MORE
INFORMATION,
CONTACT

MATT CAVANAGH
matt@arcgrp.com
630.908.5694

LAUREN SZYMELL
lszymell@arcgrp.com
630.908.5703

© 2022 ARC Real Estate. All information is from sources believed reliable, not independently verified, and thus subject to errors, omissions, and modifications such as price, listing, square footage, rates and commissions. All information, estimates and projections subject to change, market assumptions, unknown facts and conditions, and future potentialities. ARC Real Estate makes no express or implied representations or warranties, as facts and results may vary materially from all information, estimates and projections. All renderings presented are conceptual.

REALTY RESOURCES
MEMBER