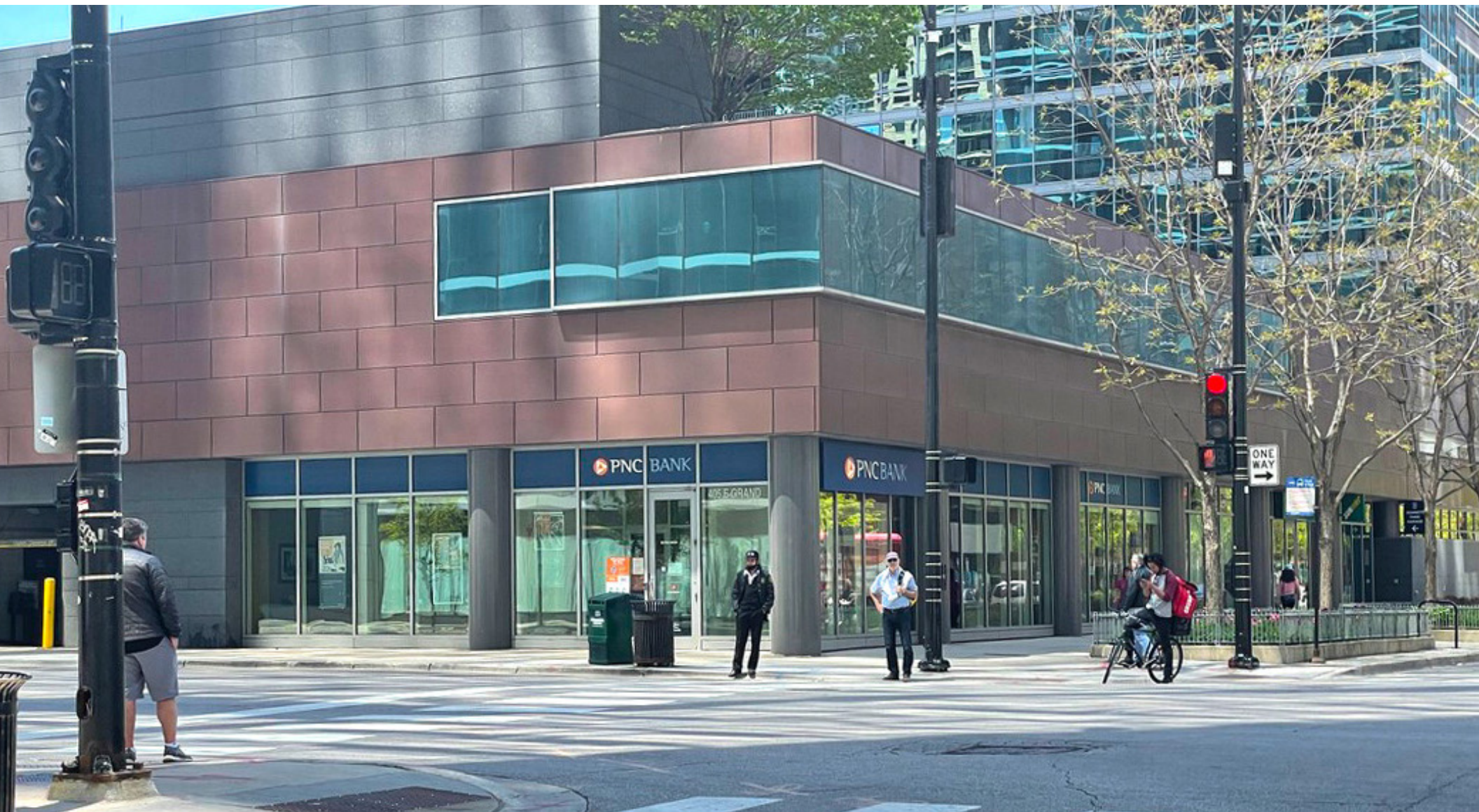


ENDCAP SPACE AVAILABLE

505 NORTH McCLURG

SEC McClurg Court and Grand Avenue | Streeterville | Chicago



505 N. McClurg COURT

SEC McClurg Court and Grand Avenue | Chicago

SPACE AVAILABLE

3,360 SF

SITE SUMMARY

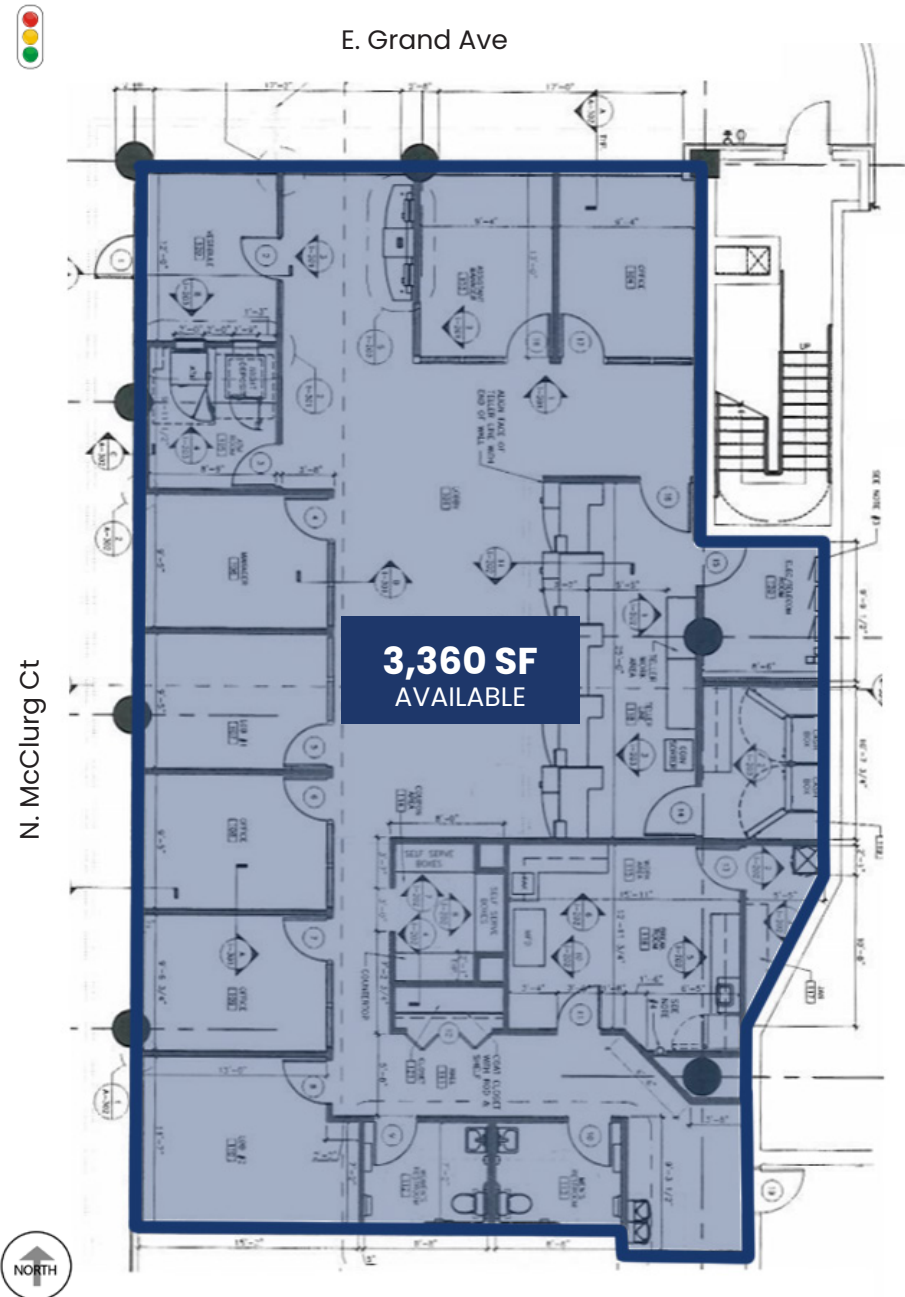
- The site is positioned at the southeast corner of Grand and McClurg, on the ground floor of the 268-unit ParkView Condominium building.
- Streeterville is a densely developed residential, commercial and entertainment district located between two of Chicago's top tourist destinations, The Magnificent Mile (22M annual visitors) and Navy Pier (9M annual visitors).
- Sub-market is home to Northwestern Memorial Hospital, Northwestern University, Feinberg School of Medicine, Ann & Robert Lurie Children's Hospital and Prentice Womens Hospital.

AREA RETAILERS



DEMOGRAPHICS

	0.50 Mile	1 Mile	2 Miles
Total Population	27,952	69,329	169,138
Average HH Income	\$170,567	\$168,205	\$163,033
Daytime Population	115,036	483,829	916,326



505 N. McCLURG COURT

SEC McClurg Court and Grand Avenue | Chicago



MATT CAVANAGH
matt@arcgrp.com
630.908.5694

ANDY ROBBINS
arobbins@arcgrp.com
630.908.5707

© 2022 ARC Real Estate. All information is from sources believed reliable, not independently verified, and thus subject to errors, omissions, and modifications such as price, listing, square footage, rates and commissions. All information, estimates and projections subject to change, market assumptions, unknown facts and conditions, and future potentialities. ARC Real Estate makes no express or implied representations or warranties, as facts and results may vary materially from all information, estimates and projections. All renderings presented are conceptual.