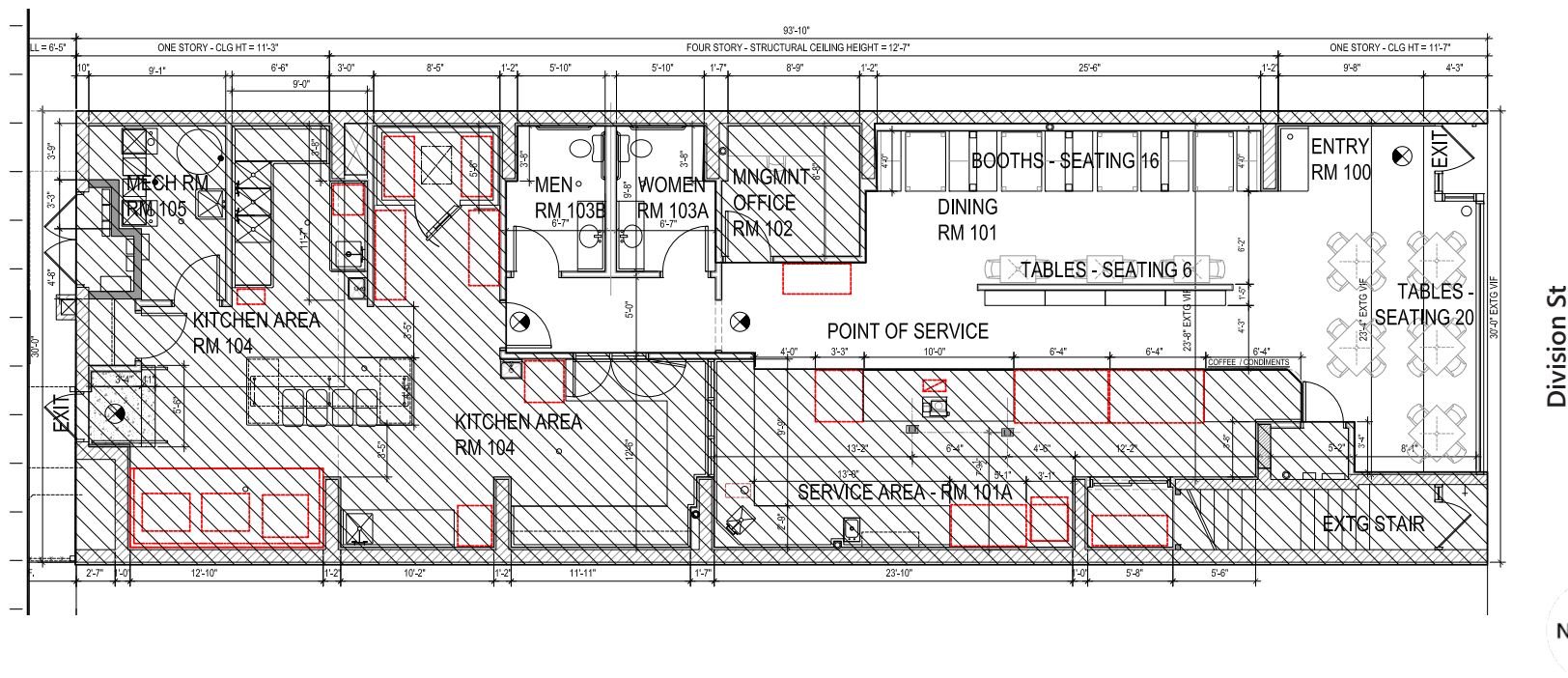


RESTAURANT SPACE AVAILABLE

2127 W. DIVISION

WICKER PARK | CHICAGO





SPACE AVAILABLE

2,600 SF

AREA TENANTS



SITE SUMMARY

- Formerly occupied by Kanela Breakfast Club.
- Existing restaurant infrastructure (including black iron ventilation and additional FF&E still in place).
- Extra wide sidewalk cafe seating available.

DEMOGRAPHICS

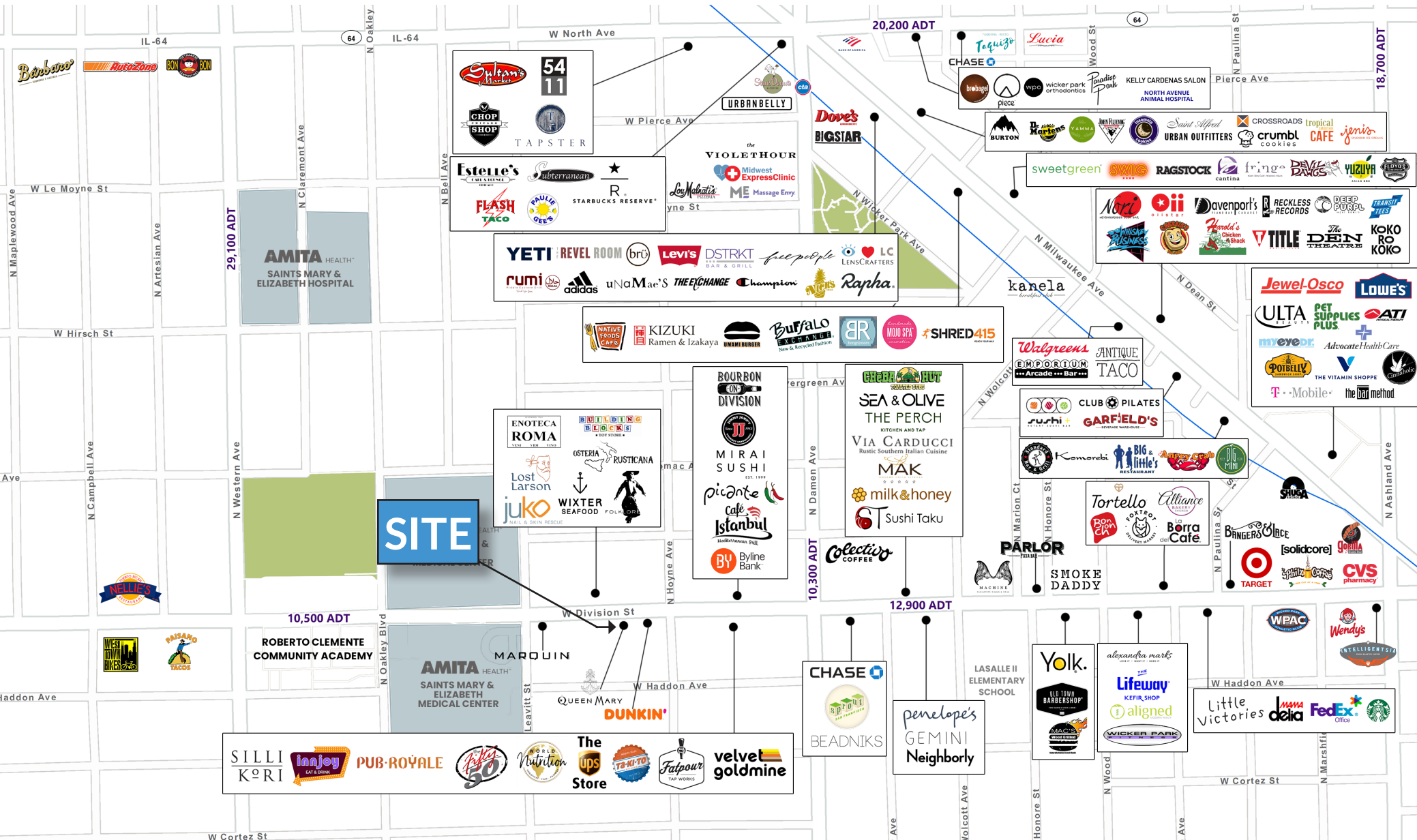
	1/2 Mile	1 Mile	2 Miles
Total Population	19,203	78,404	206,928
Average HH Income	\$145,598	\$143,470	\$133,654
Daytime Population	12,108	46,356	133,127

RESTAURANT SPACE AVAILABLE

2127 WEST DIVISION STREET

Southwest Quadrant of Hoyne & Division | Wicker Park, Chicago

A·R·C
REAL ESTATE



ANTHONY CAMPAGNI
ac@arcgrp.com
847.651.8669

ELAN RASANSKY
elan@arcgrp.com
414.380.1555

© 2022 ARC Real Estate. All information is from sources believed reliable, not independently verified, and thus subject to errors, omissions, and modifications such as price, listing, square footage, rates and commissions. All information, estimates and projections subject to change, market assumptions, unknown facts and conditions, and future potentialities. ARC Real Estate makes no express or implied representations or warranties, as facts and results may vary materially from all information, estimates and projections. All renderings presented are conceptual.

REALTY
RESOURCES
MEMBER