

CENTRAL STREET EVANSTON RETAIL / CAFÉ / RESTAURANT SPACE AVAILABLE

2114 CENTRAL STREET

SWQ Central Street and Green Bay Road | Evanston, IL



SPACE AVAILABLE
1,400 SF

2114 CENTRAL STREET

SWQ Central Street and Green Bay Road | Evanston, IL

SPACE AVAILABLE

1,400 SF

SUMMARY

- Former Starbucks
- 2 ADA Restrooms
- 20’ frontage on Central Street Business District
- Directly across from 59 car municipal parking lot
- Dense High Income Demographics

AREA RETAILERS

Foodstuffs, Lush, Backlot Coffee, The Spice House, Paper Source, Great Harvest Bread Co.

DEMOGRAPHICS

DRIVE TIME	5 MIN	10 MIN	20 MIN
Total Population	30,292	151,107	847,763
Households	11,660	54,622	324,833
Average HH Income	\$180,473	\$155,117	\$116,084

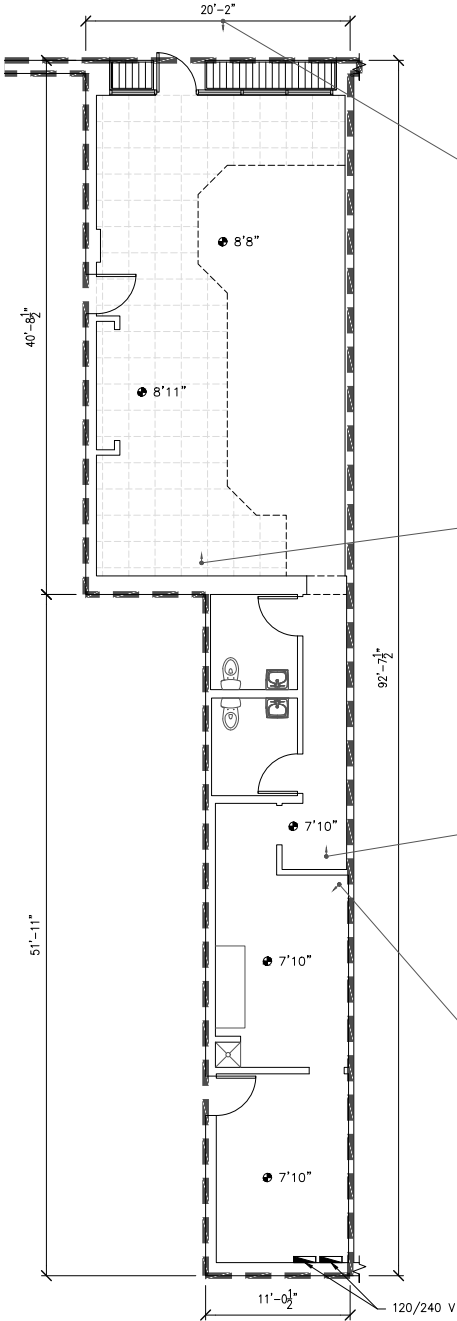


PHOTO 1: FRONT ENTRANCE

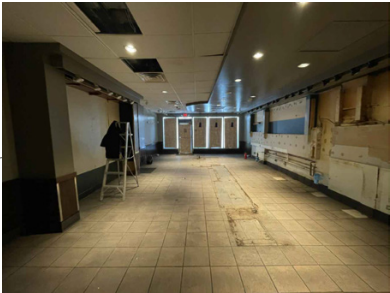


PHOTO 2: FRONT AREA



PHOTO 3: HALLWAY TO B.O.H. W/ RESTROOMS



PHOTO 4: BACK OF HOUSE SPACE

CENTRAL STREET EVANSTON RETAIL / CAFÉ / RESTAURANT SPACE AVAILABLE

2114 CENTRAL STREET

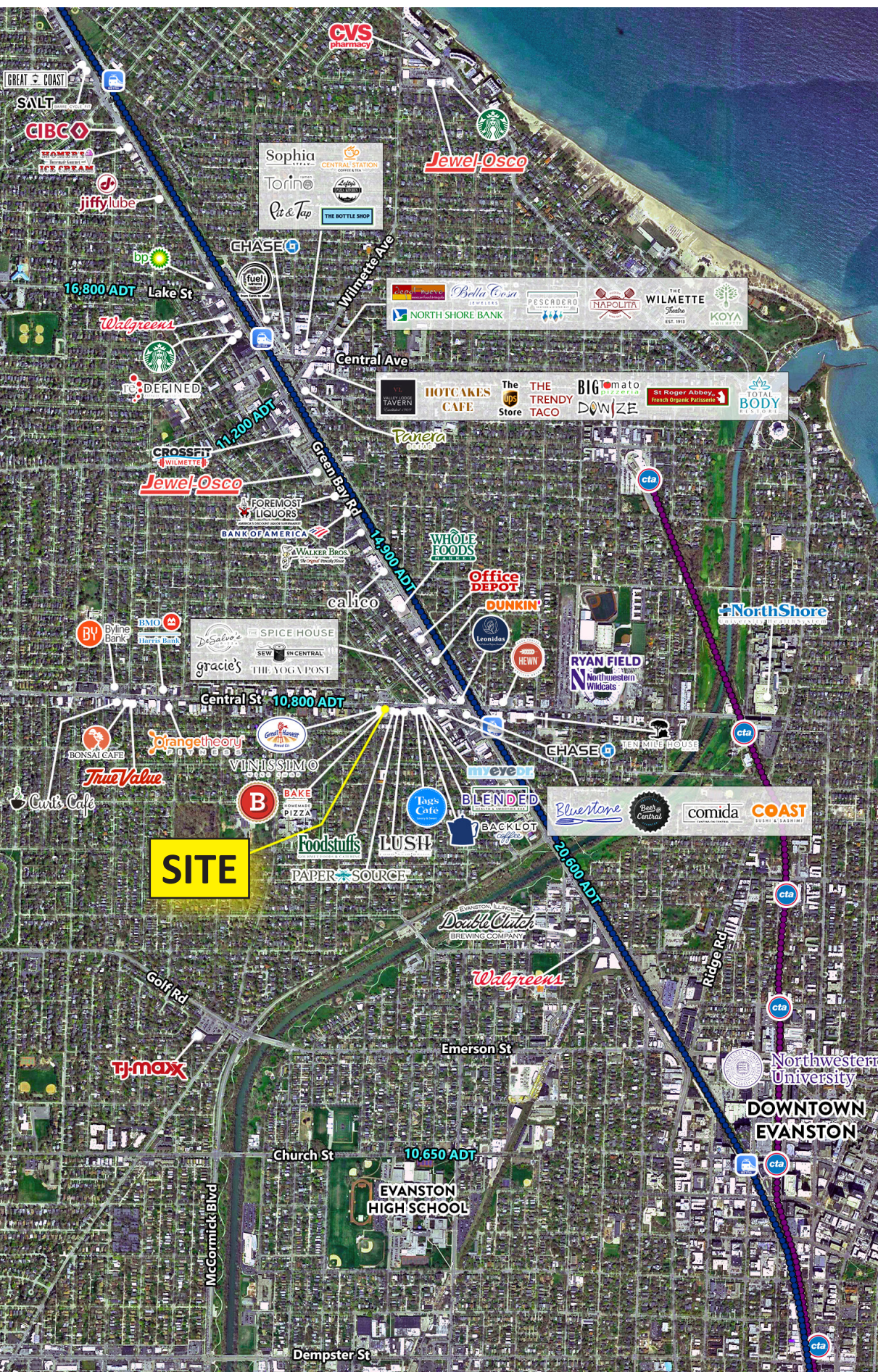
SWQ Central Street and Green Bay Road | Evanston, IL

A·R·C
REAL ESTATE

FOR MORE
INFORMATION,
CONTACT

MATT CAVANAGH
matt@arcgrp.com
630.908.5694

LAUREN SZYMELL
lszymell@arcgrp.com
630.908.5703



© 2023 ARC Real Estate. All information is from sources believed reliable, not independently verified, and thus subject to errors, omissions, and modifications such as price, listing, square footage, rates and commissions. All information, estimates and projections subject to change, market assumptions, unknown facts and conditions, and future potentialities. ARC Real Estate makes no express or implied representations or warranties, as facts and results may vary materially from all information, estimates and projections. All renderings presented are conceptual.

REALTY RESOURCES
MEMBER