

7.45 ACRES AVAILABLE FOR LEASE, SALE, BUILD TO SUIT

1000 S. ROUTE 14

SWQ Route 14 & Airport Road | Harvard, IL



7.45 ACRES AVAILABLE FOR LEASE, SALE, BUILD TO SUIT

1000 S. ROUTE 14

SWQ Route 14 & Airport Road | Harvard, IL

A·R·C
REAL ESTATE

BUILDING SIZE

Proposed 55,000 SF

LOT SIZE

7.45 Acres

SITE SUMMARY

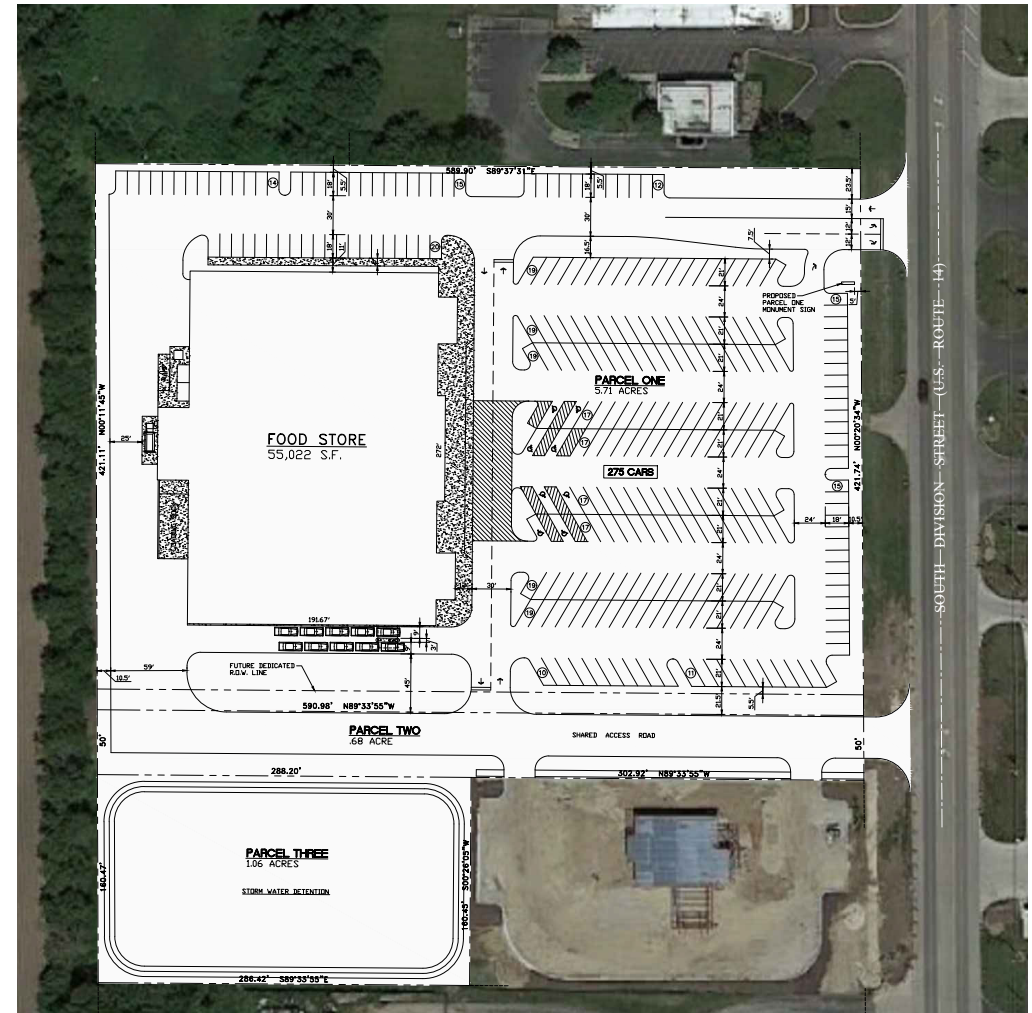
- 275 car parking
- 2 curb cuts to US Hwy 14 (15,400 ADT)

AREA TENANTS



DEMOGRAPHICS

	5 Miles	7 Miles	10 Miles
Total Population	12,464	16,344	33,936
Average HH Income	\$99,890	\$104,576	\$116,827
Daytime Population	10,129	12,903	28,304



SITE PLAN
SCALE: 1" = 40'-0"



7.45 ACRES AVAILABLE FOR LEASE, SALE, BUILD TO SUIT

1000 S. ROUTE 14

SWQ Route 14 & Airport Road | Harvard, IL

A·R·C
REAL ESTATE



MATT CAVANAGH
matt@arcgrp.com
630.908.5694

LAUREN SZYMELL
lszymell@arcgrp.com
630.908.5703

© 2022 ARC Real Estate. All information is from sources believed reliable, not independently verified, and thus subject to errors, omissions, and modifications such as price, listing, square footage, rates and commissions. All information, estimates and projections subject to change, market assumptions, unknown facts and conditions, and future potentialities. ARC Real Estate makes no express or implied representations or warranties, as facts and results may vary materially from all information, estimates and projections. All renderings presented are conceptual.

REALTY
RESOURCES
MEMBER