

FREESTANDING BUILDING AVAILABLE FOR LEASE

7207 ROOSEVELT ROAD

NWC Roosevelt Road & Harlem Avenue | Forest Park, IL



FREESTANDING BUILDING AVAILABLE FOR LEASE

7207 ROOSEVELT ROAD

NWC Roosevelt Road & Harlem Avenue | Forest Park, IL

A·R·C
REAL ESTATE

BUILDING SIZE

2,236 SF

SITE SUMMARY

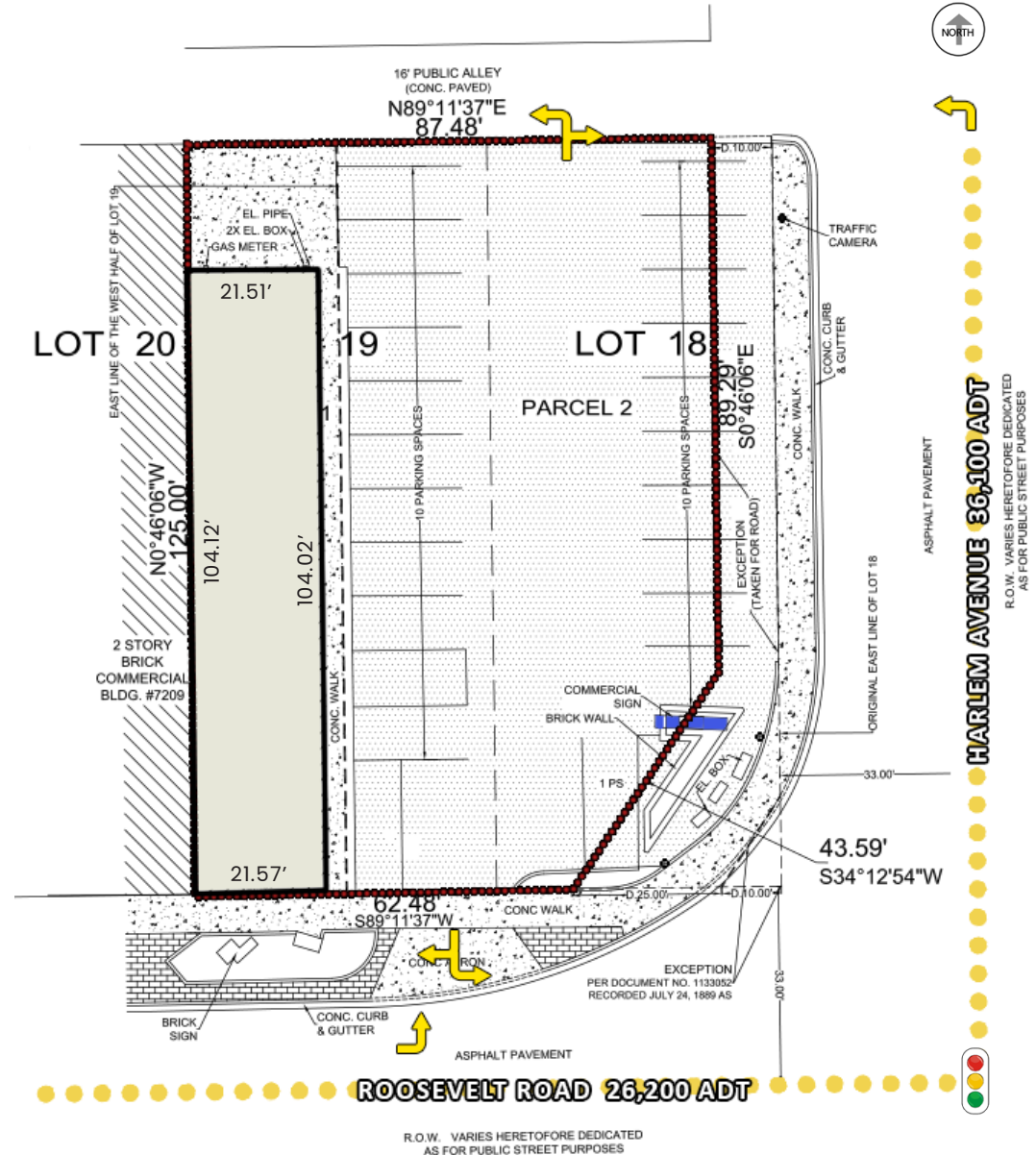
- Hard corner, high traffic intersection (62,300 ADT)
- Access from Harlem Avenue and Roosevelt Road
- 21 parking spaces
- Pylon sign

AREA TENANTS



DEMOGRAPHICS

	1 Mile	3 Miles	5 Miles
Total Population	30,323	268,019	703,269
Median HH Income	\$84,168	\$67,818	\$60,667
Daytime Population	24,787	235,617	602,028



FREESTANDING BUILDING AVAILABLE FOR LEASE

7207 ROOSEVELT ROAD

NWC Roosevelt Road & Harlem Avenue | Forest Park, IL

A·R·C
REAL ESTATE



For More
Information,
Contact

MATT CAVANAGH
matt@arcgrp.com
630.908.5694

LAUREN SZYMELL
lszymell@arcgrp.com
630.908.5703

© 2024 ARC Real Estate. All information is from sources believed reliable, not independently verified, and thus subject to errors, omissions, and modifications such as price, listing, square footage, rates and commissions. All information, estimates and projections subject to change, market assumptions, unknown facts and conditions, and future potentialities. ARC Real Estate makes no express or implied representations or warranties, as facts and results may vary materially from all information, estimates and projections. All renderings presented are conceptual.

REALTY
RESOURCES
MEMBER