

RETAIL SPACE AVAILABLE FOR LEASE

NEW RETAIL DEVELOPMENT

1250-1254 Ogden Avenue | Downers Grove, Illinois



RETAIL SPACE AVAILABLE FOR LEASE NEW RETAIL DEVELOPMENT

1250-1254 Ogden Avenue | Downers Grove, Illinois



RETAIL SPACE AVAILABLE

9,606 SF Multi-Tenant Building

Prime Location Located in the heart of Downers Grove, Illinois, this exciting retail redevelopment along bustling Ogden Road offers unparalleled visibility and access in a high-traffic corridor.

Potential Flexible floorplans and space configurations, including drive-through capability, are available to accommodate a wide range of retail, dining, and service concepts.

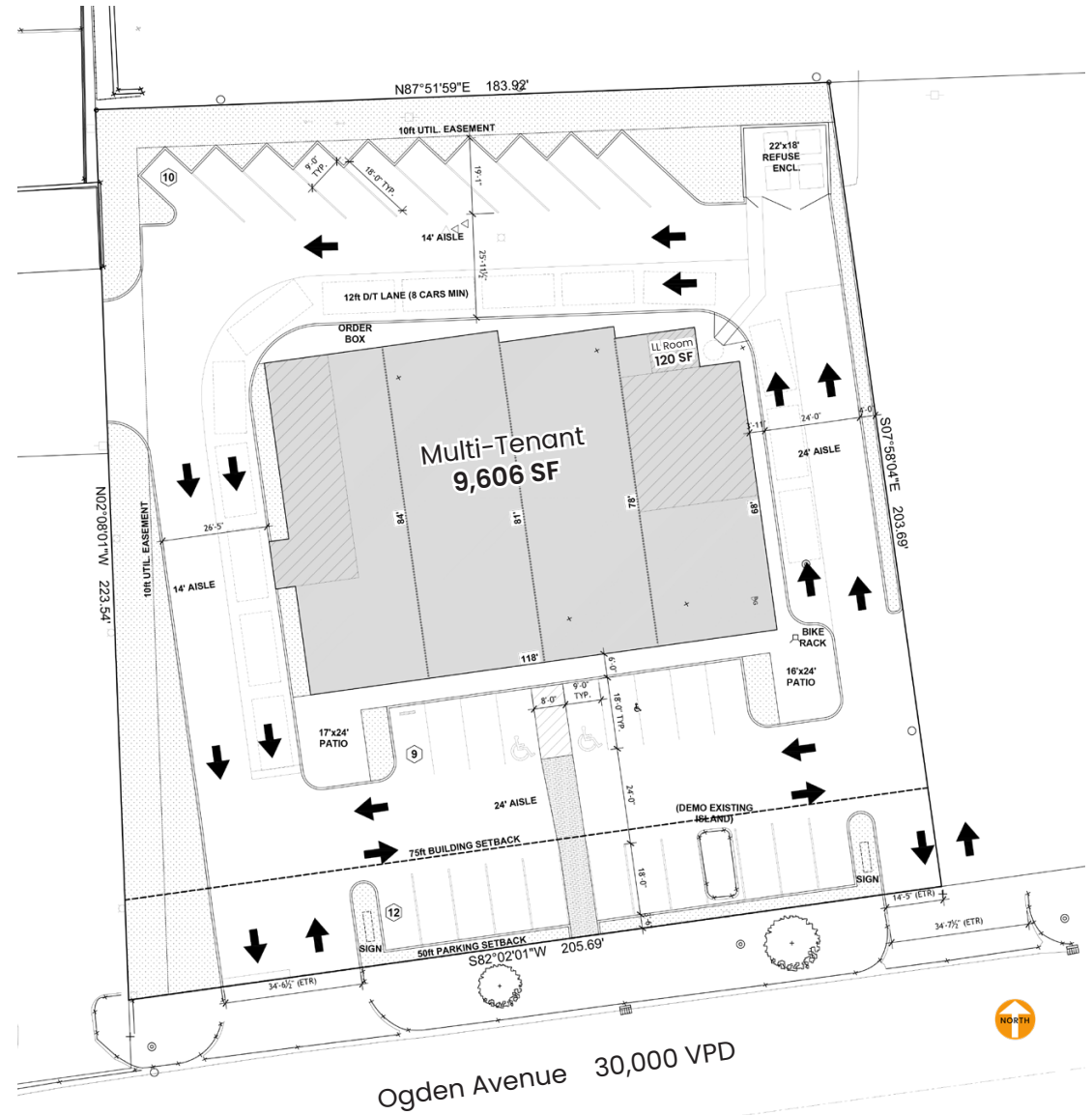
Opportunity This redevelopment offers the opportunity to be part of Downers Grove's dynamic retail landscape, benefiting from excellent exposure and connectivity in a community known for its robust economic activity and quality of life.

AREA TENANTS



DEMOGRAPHICS

	1 Mile	3 Miles	5 Miles
Total Population	12,134	90,593	264,613
Average HH Income	\$203,354	\$165,356	\$166,538
Daytime Population	11,109	122,360	318,424



RETAIL SPACE AVAILABLE FOR LEASE
NEW RETAIL DEVELOPMENT

1250-1254 Ogden Avenue | Downers Grove, Illinois

 [Click Here For Drone Footage](#)

A·R·C
REAL ESTATE

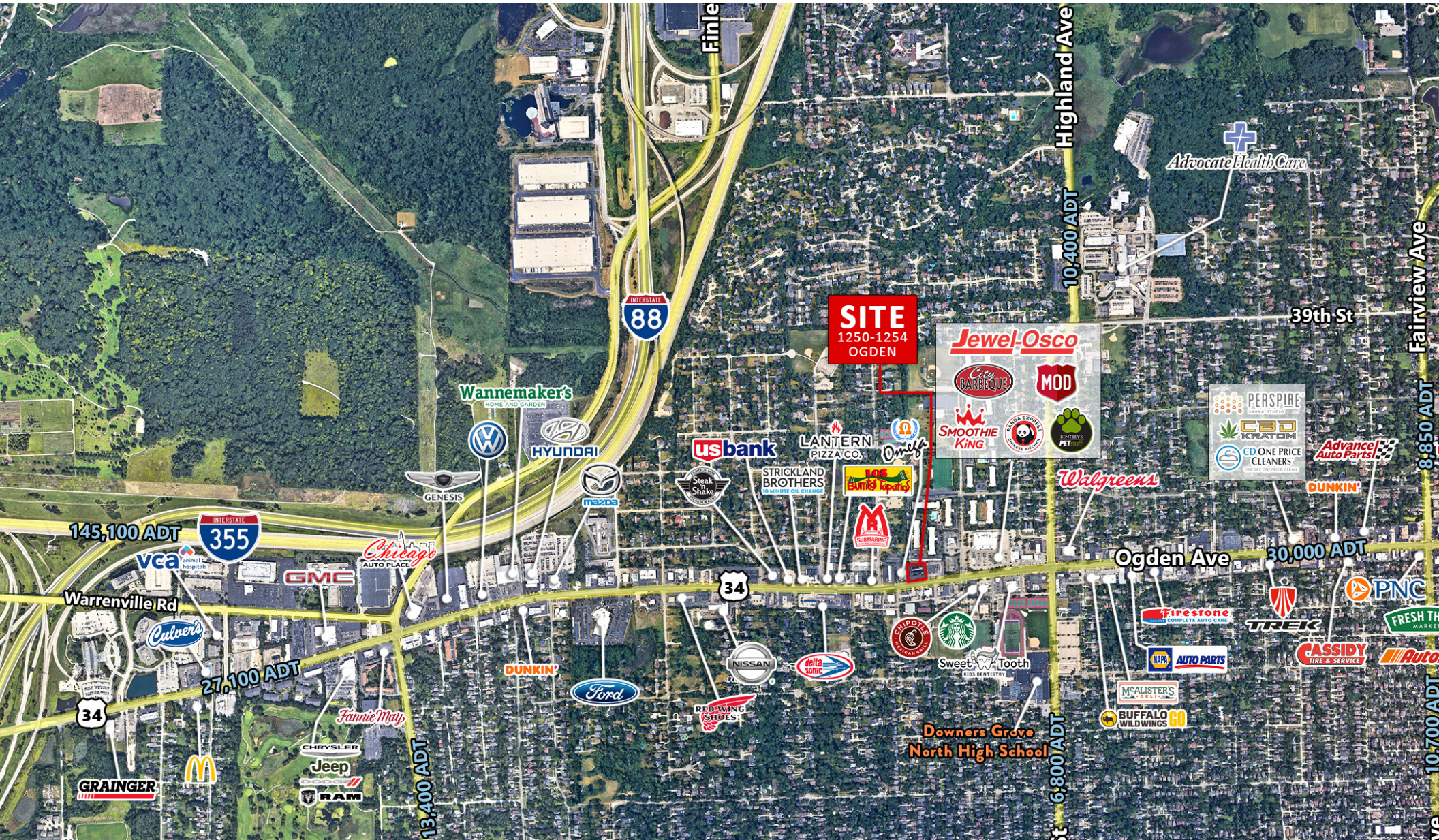


RETAIL SPACE AVAILABLE FOR LEASE
NEW RETAIL DEVELOPMENT

1250-1254 Ogden Avenue | Downers Grove, Illinois

[Click Here For Drone Footage](#)

A·R·C
 REAL ESTATE



FOR MORE
 INFORMATION
 CONTACT

LAUREN SZYMELL
 lszymell@arcgrp.com
 630.908.5703

DANIELLE KLING
 danielle@arcgrp.com
 630.908.5693

© 2025 ARC Real Estate. All information is from sources believed reliable, not independently verified, and thus subject to errors, omissions, and modifications such as price, listing, square footage, rates and commissions. All information, estimates and projections subject to change, market assumptions, unknown facts and conditions, and future potentialities. ARC Real Estate makes no express or implied representations or warranties, as facts and results may vary materially from all information, estimates and projections. All renderings presented are conceptual.

REALTY
 RESOURCES
 MEMBER