

RETAIL SPACE AVAILABLE FOR LEASE

# 1916 GATEWAY CENTER

SEQ Belvidere Rd/I-90 ALT & US-20 | Belvidere, IL



ARC REAL ESTATE | 700 Commerce Drive, Suite 110, Oak Brook, IL 60523 | arcgrp.com | 630.908.5700



# 1916 GATEWAY CENTER DRIVE

SEQ Belvidere Rd/I-90 ALT & US-20 | Belvidere, IL

## SPACE AVAILABLE

1,700 SF

## SITE SUMMARY

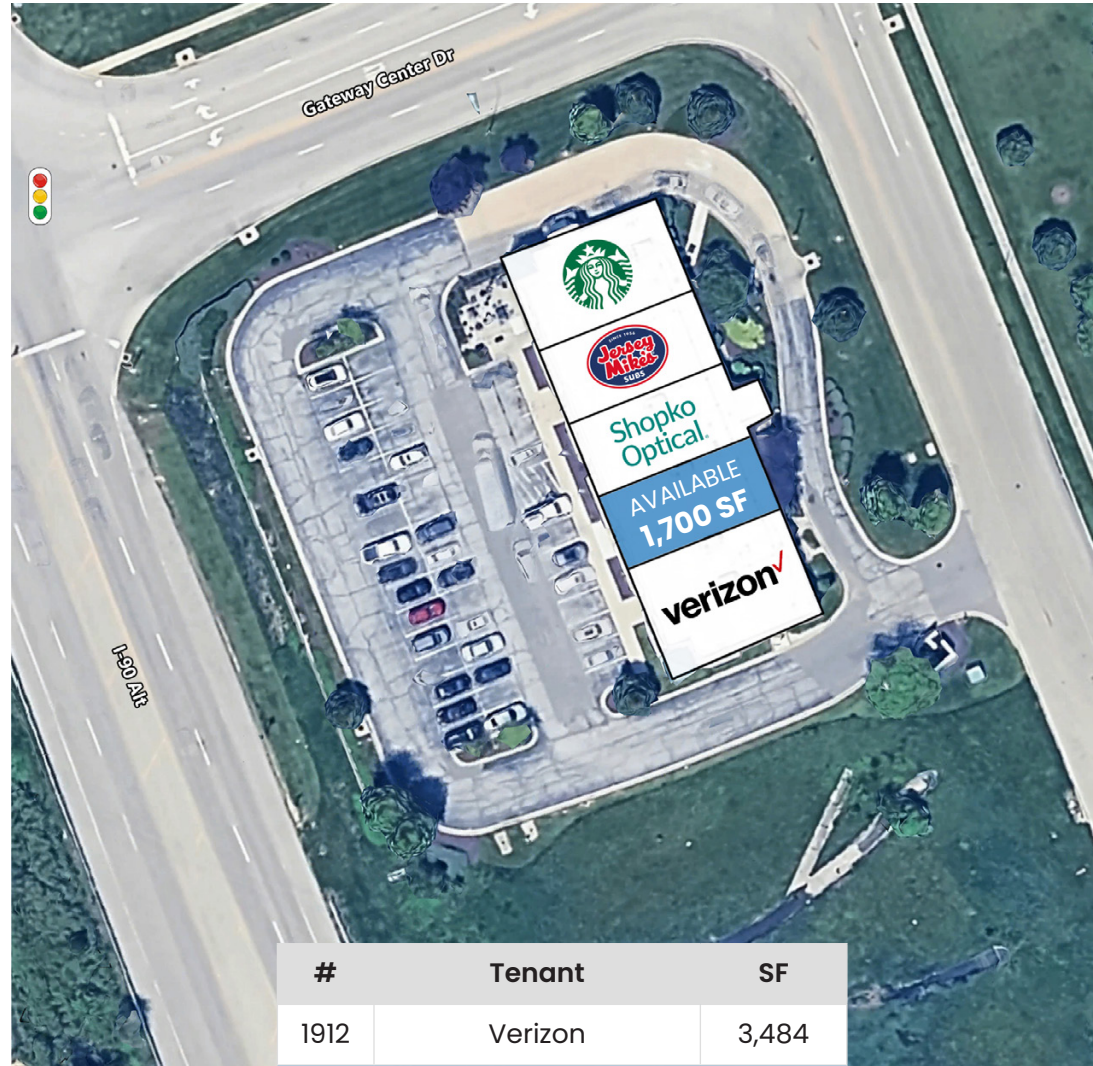
- Located on a high-traffic outlet of Walmart Supercenter
- Excellent visibility and access from Gateway Center Drive
- Shared parking with strong daily customer counts
- Ideal for retail, service, medical, or quick-serve restaurant uses
- Convenient access to I-90 and Route 20

## AREA TENANTS



## DEMOGRAPHICS

	1 Mile	3 Miles	5 Miles
<b>Total Population</b>	3,776	22,369	28,226
<b>Average HH Income</b>	\$115,391	\$89,978	\$95,614
<b>Daytime Population</b>	3,325	22,632	29,480



#	Tenant	SF
1912	Verizon	3,484
<b>1916</b>	<b>AVAILABLE</b>	<b>1,700</b>
1918	Shopko Optical	1,680
1920	Jersey Mike's	1,700
1922	Starbucks	1,850

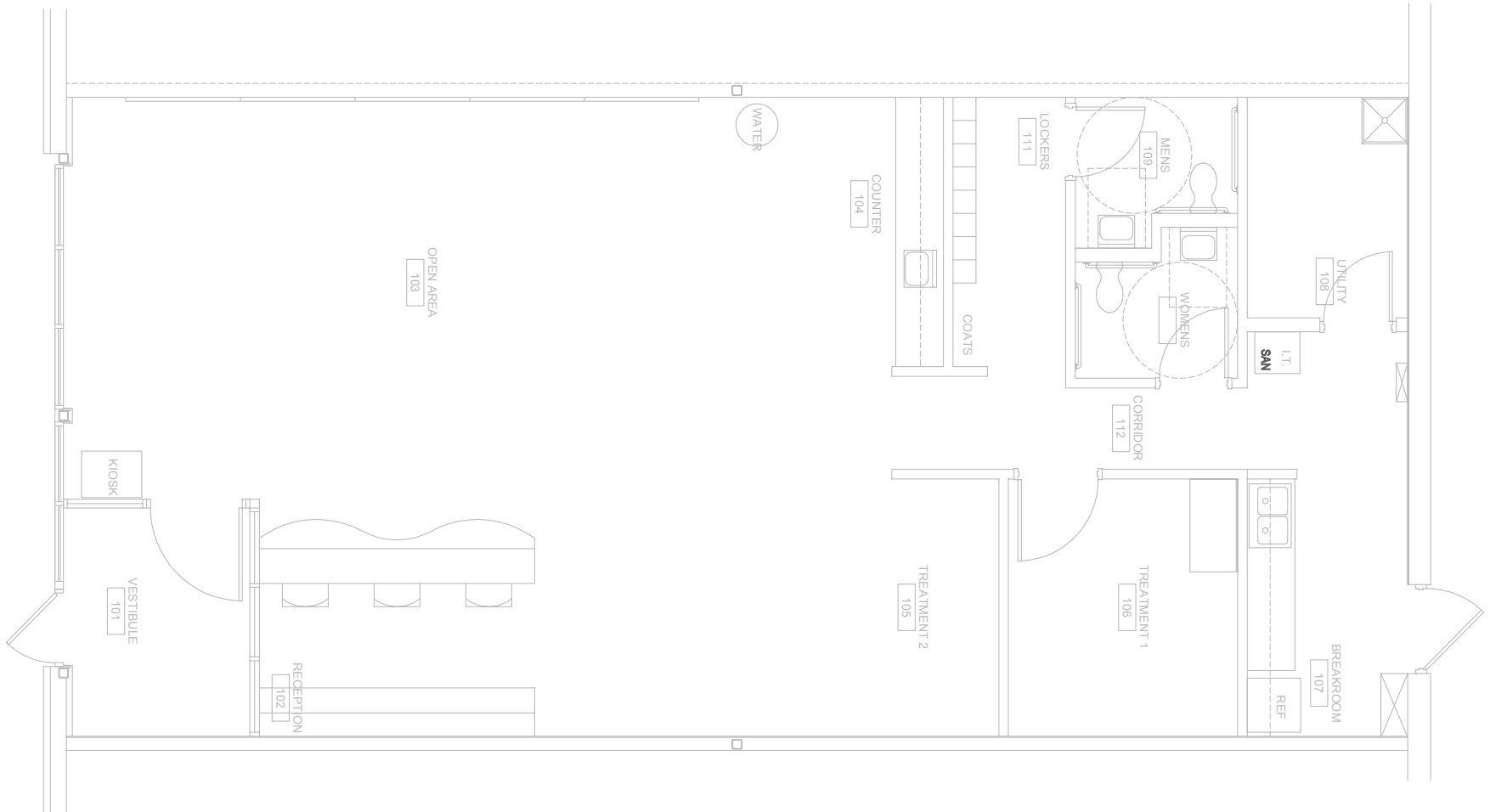
RETAIL SPACE AVAILABLE FOR LEASE

# 1916 GATEWAY CENTER DRIVE

SEQ Belvidere Rd/I-90 ALT & US-20 | Belvidere, IL



## FLOOR PLAN



RETAIL SPACE AVAILABLE FOR LEASE

# 1916 GATEWAY CENTER DRIVE

SEQ Belvidere Rd/I-90 ALT & US-20 | Belvidere, IL



FOR MORE  
INFORMATION,  
CONTACT

**LAUREN SZYMELL**  
lszymell@arcgrp.com  
630.908.5703

**JEANNE ELLIOTT**  
jeanne@arcgrp.com  
630.908.5696



The information has been obtained from sources believed reliable. While we do not doubt its accuracy, we have not verified it and make no guarantee, warranty or representation about it.