

LAND AVAILABLE | 5.17 ACRES | DIVISIBLE

15555 S. HARLEM AVENUE

Orland Park, Illinois



15555 S. HARLEM AVENUE

Orland Park, IL

PROPERTY HIGHLIGHTS

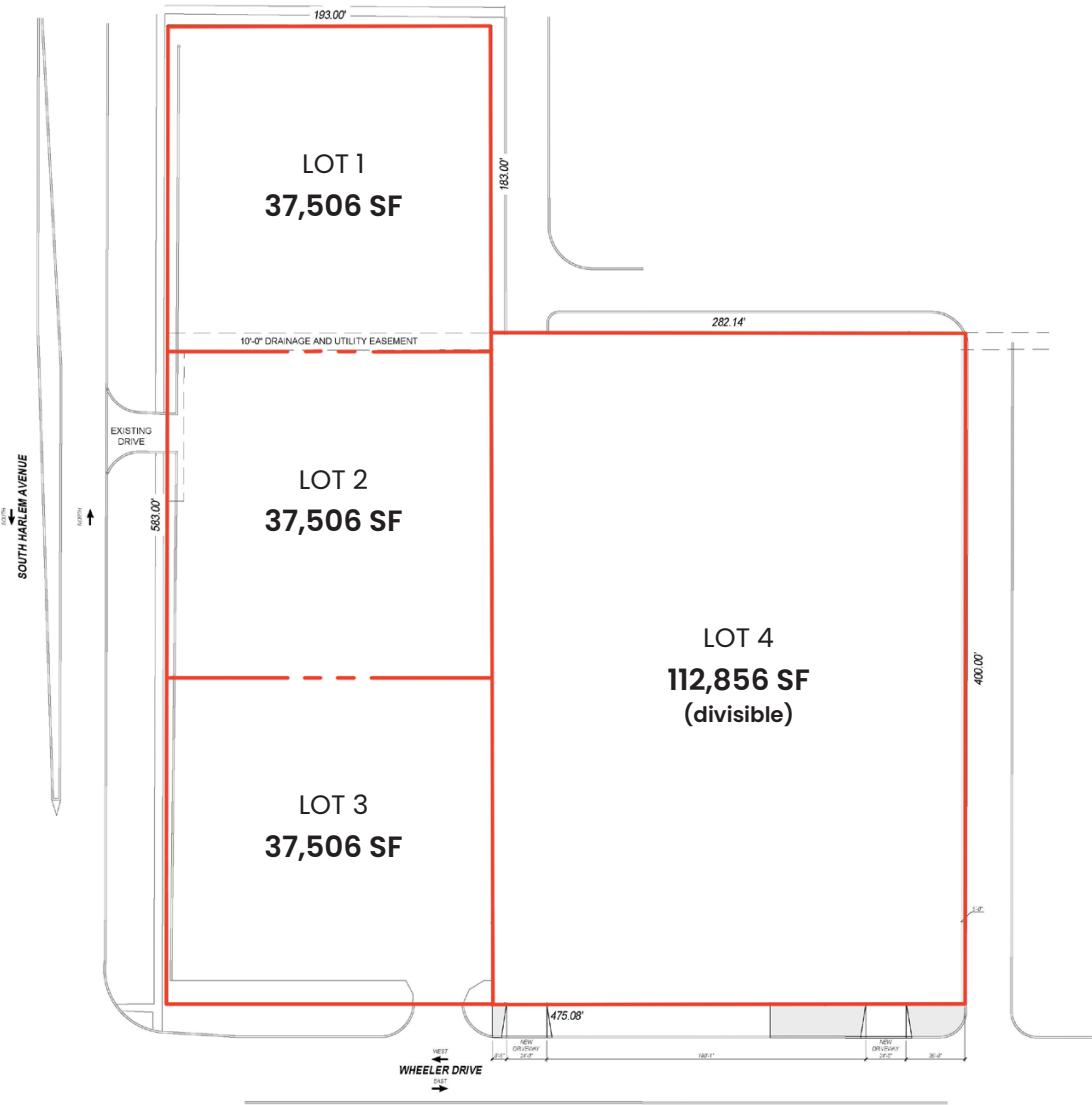
- Size** ±5.17 Acres (divisible)
- Divisible** Flexible parcel sizes to suit various business or investment needs
- Location** High-visibility frontage on Harlem Avenue with strong traffic counts
- Accessibility** Easy access to I-80, I-294, and Metra stations
- Demographics** Dense residential and retail presence in surrounding area

AREA HIGHLIGHTS

- Minutes from Orland Square Mall, Costco, Whole Foods, and other major retailers
- Strong household incomes and growing population
- Close to schools, parks, and recreational amenities

DEMOGRAPHICS

	1 Mile	3 Miles	5 Miles
Total Population	10,090	87,808	189,672
Average HH Income	\$111,249	\$115,987	\$117,941
Daytime Population	13,184	74,584	188,721



15555 S. HARLEM AVENUE

A · R · C
REAL ESTATE



DANIELLE KLING

