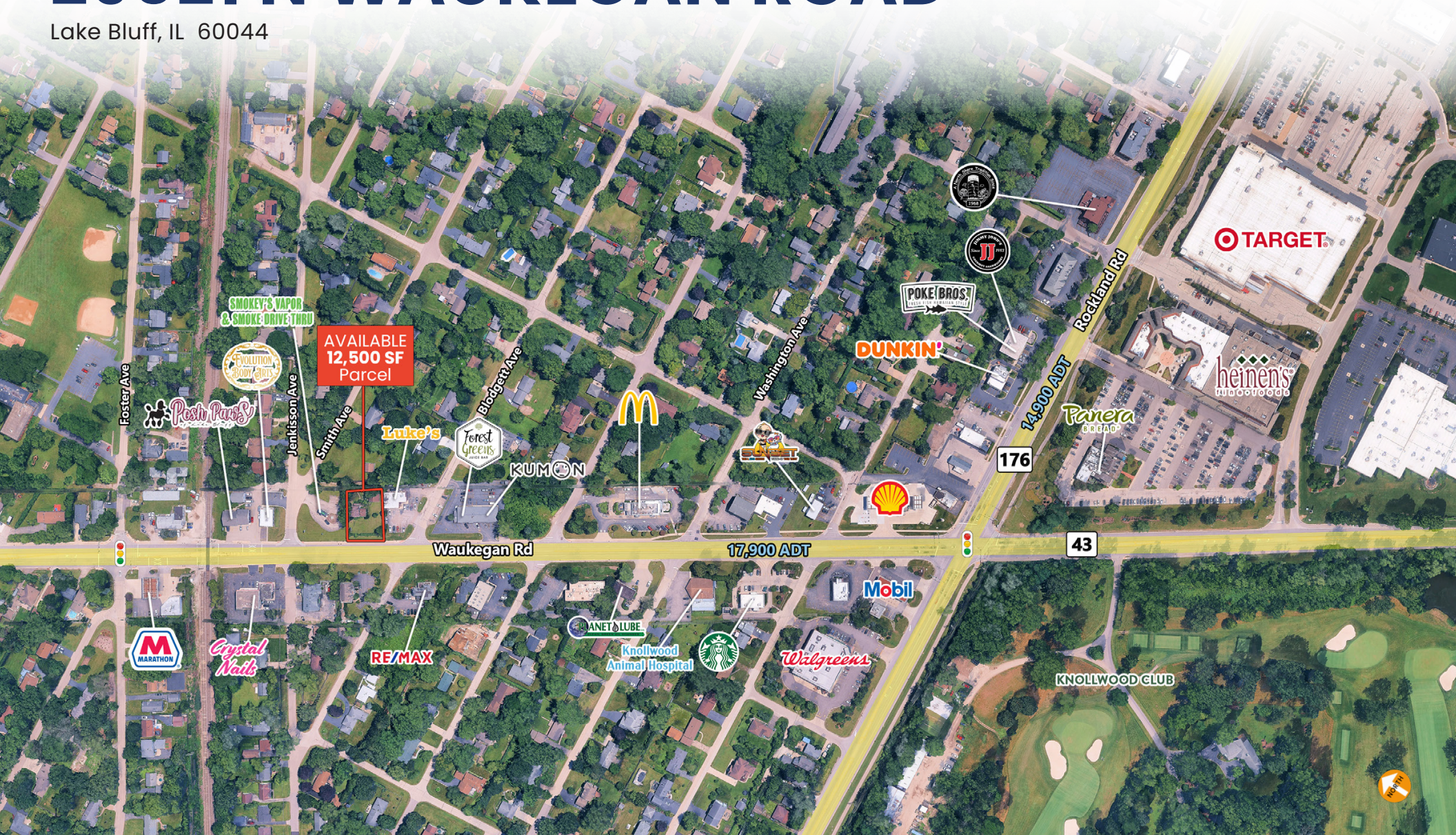


AVAILABLE FOR GROUND LEASE or BUILD TO SUIT

29021 N WAUKEGAN ROAD

Lake Bluff, IL 60044



PROPERTY DETAILS

- 12,500 SF Parcel (100'x125')
- Can accommodate up to 2,000 SF building
- 100ft Waukegan Road Frontage

LOCATION SUMMARY

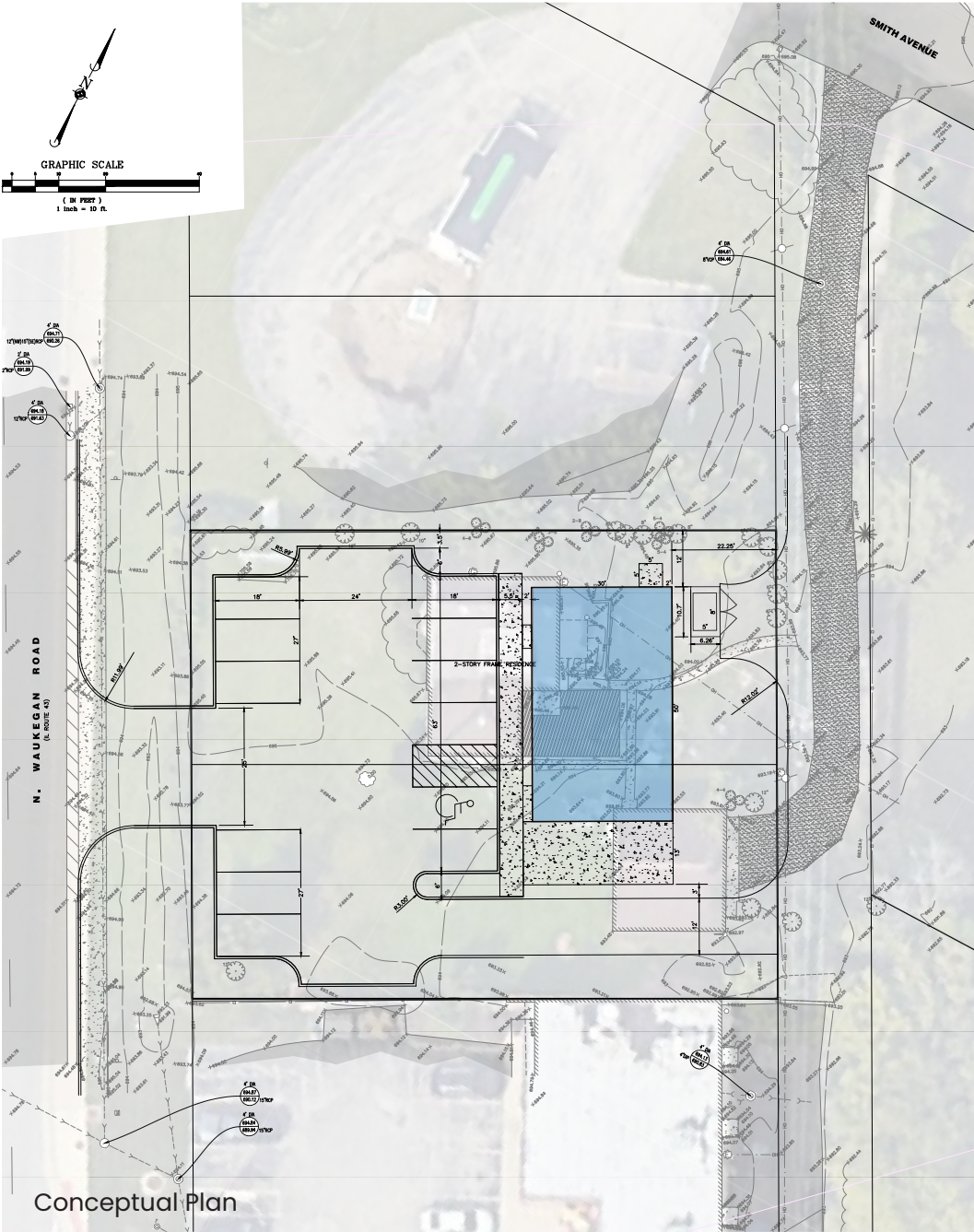
- Located within the Knollwood neighborhood of Lake Bluff, a village in the North Shore of Chicago with stable local demographics.

AREA TENANTS



DEMOGRAPHICS

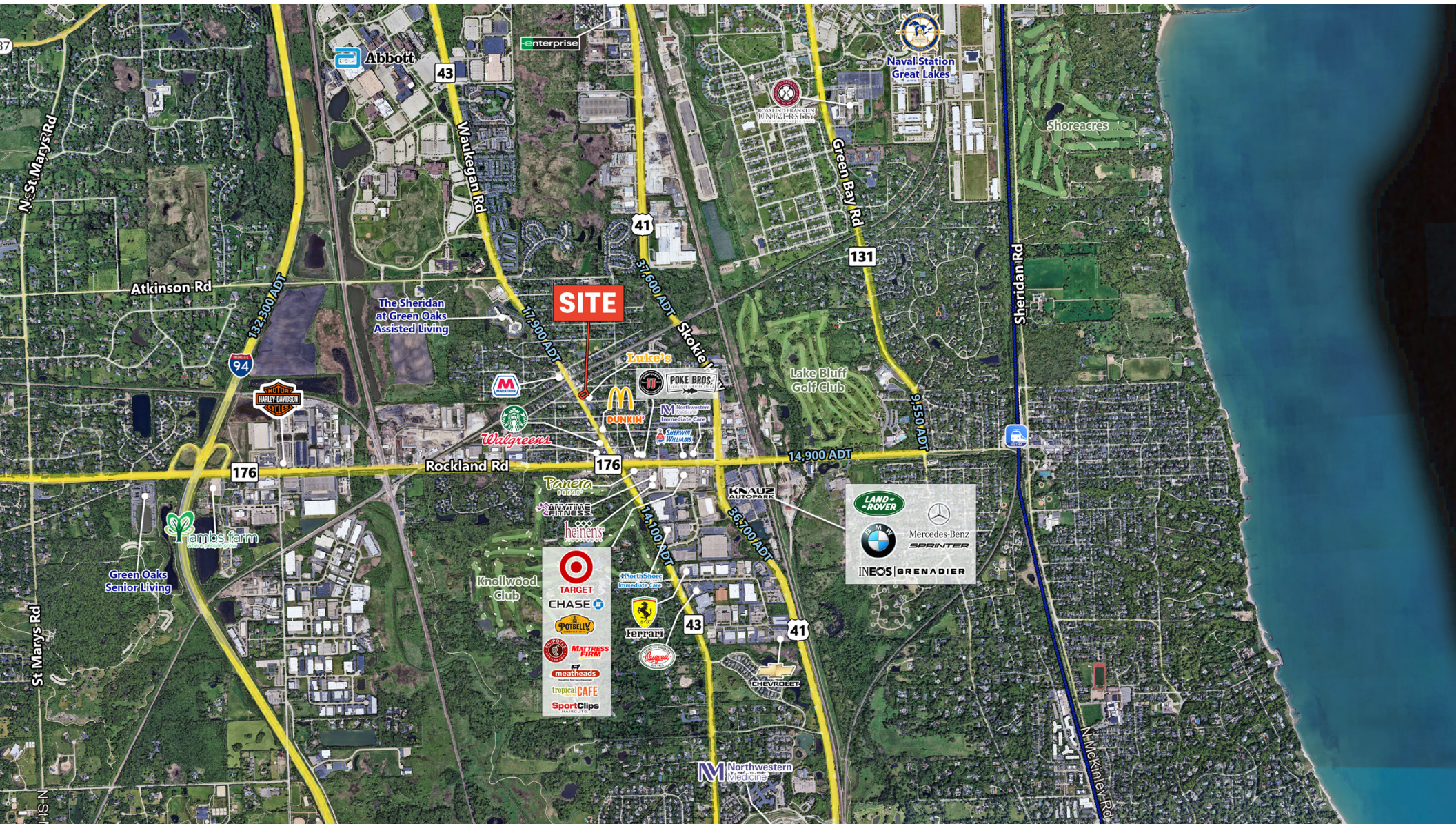
	3 Miles	5 Miles	7 Miles
Total Population	35,449	113,132	247,696
Average HH Income	\$182,543	\$174,417	\$157,460
Daytime Population	67,688	171,497	308,466



AVAILABLE FOR GROUND LEASE or BUILD TO SUIT

29021 N WAUKEGAN ROAD

Lake Bluff, IL 60044



FOR MORE
INFORMATION,
CONTACT

MATT CAVANAGH
matt@arcgrp.com
630.908.5694

**REALTY
RESOURCES**
MEMBER

The information above has been obtained from sources believed reliable. While we do not doubt its accuracy, we have not verified it and make no guarantee, warranty or representation about it.