

RETAIL PRESENCE IN THE HEART OF MAIN STREET

# THE DOMAIN ON MAIN

4915 Main Street | Downers Grove, Illinois 60515



# THE DOMAIN ON MAIN

4915 Main Street | Downers Grove, Illinois 60515

## SPACE AVAILABLE

**4,500 SF**

- Space can be demised to 1,500 SF –3,000 SF
- Outdoor patio

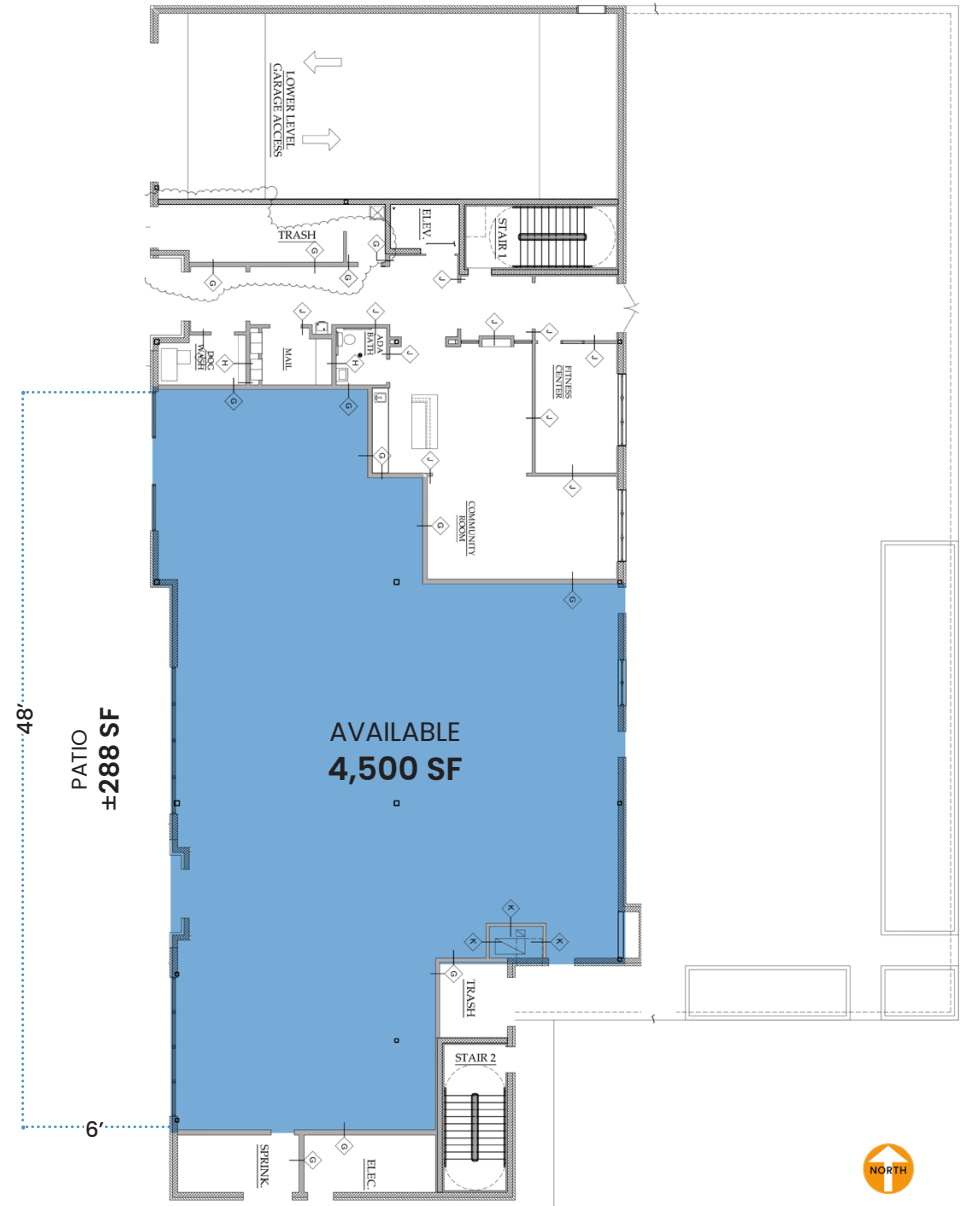
## PROPERTY HIGHLIGHTS

- Premier retail opportunity positioned on the ground level of new 21 unit luxury residential development, within the vibrant Downtown Downers Grove corridor
- High-exposure storefront along Main Street with exceptional visibility and foot traffic
- Surrounded by a strong mix of national and local operators, enhancing tenant synergy
- Steps from the Metra BNSF Line station, drawing consistent daily activity
- Dense, affluent trade area with robust daytime population and strong consumer spending
- Ideal for retailers, service users, boutique fitness, or dining concepts

## DEMOGRAPHICS

	1 Mile	3 Miles	5 Miles
<b>Total Population</b>	14,483	94,775	254,569
<b>Average HH Income</b>	\$201,339	\$165,161	\$160,750
<b>Daytime Population</b>	14,383	113,866	307,601

MAIN STREET / 12,900 ADT





RETAIL PRESENCE IN THE HEART OF MAIN STREET

## THE DOMAIN ON MAIN

4915 Main Street | Downers Grove, Illinois 60515



4,500 SF Potential Restaurant Concept



Outdoor Patio



RETAIL PRESENCE IN THE HEART OF MAIN STREET

# THE DOMAIN ON MAIN

4915 Main Street | Downers Grove, Illinois 60515



Downtown Downers Grove

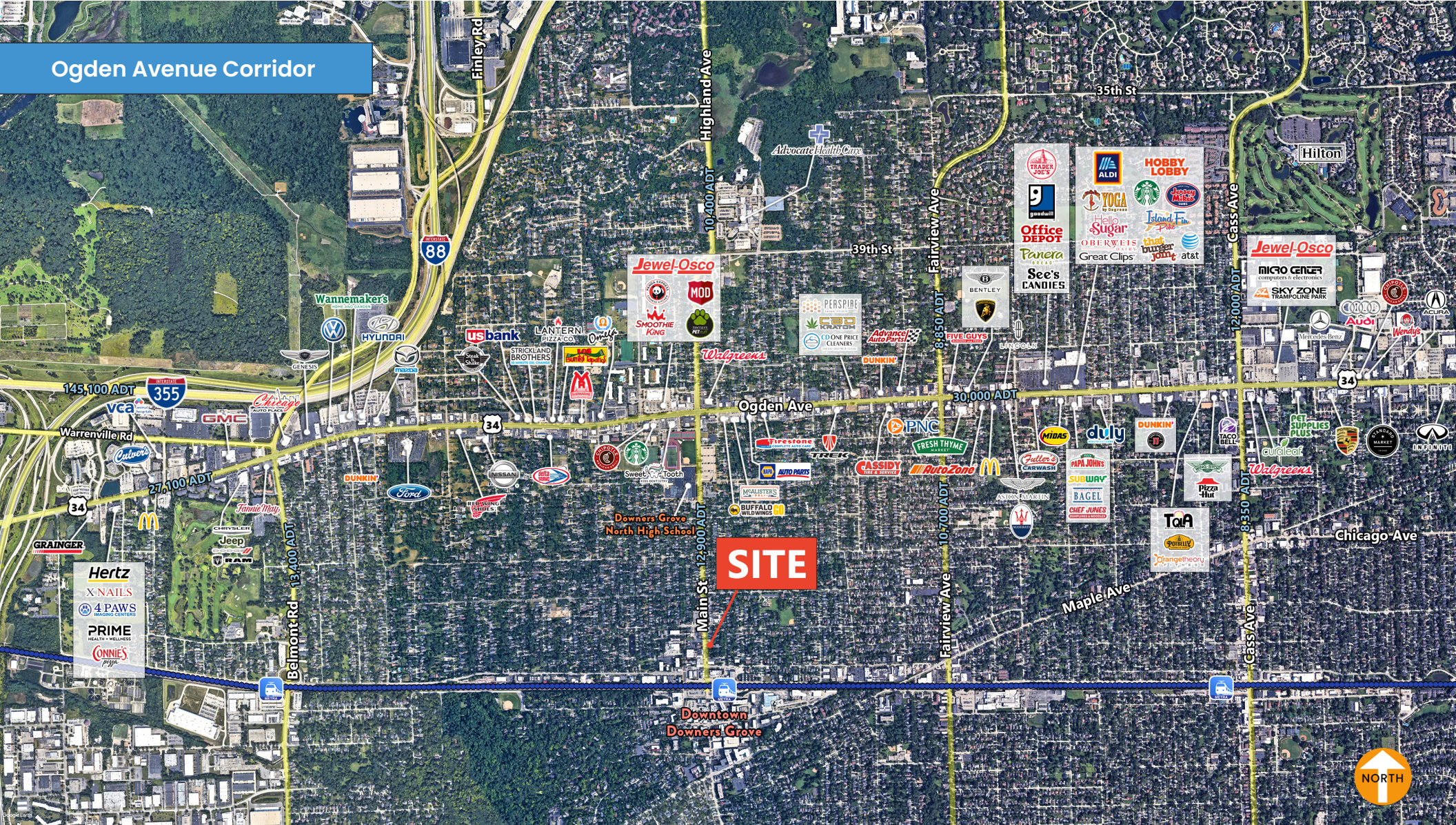




RETAIL PRESENCE IN THE HEART OF MAIN STREET

# THE DOMAIN ON MAIN

4915 Main Street | Downers Grove, Illinois 60515



FOR MORE  
INFORMATION,  
CONTACT

**LAUREN SZYMELL**  
lszymell@arcgrp.com  
630.908.5703

**DANIELLE KLING**  
danielle@arcgrp.com  
630.908.5393



© ARC REAL ESTATE 2025 / The information above has been obtained from sources believed reliable. While we do not doubt its accuracy, we have not verified it and make no guarantee, warranty or representation about it.