

±1.09 AC RETAIL PAD AVAILABLE

BLAIN'S FARM & FLEET OUTLOT

2583 S. Prairie View Road | Chippewa Falls, WI 54729



LAND FOR SALE

BLAIN'S FARM & FLEET OUTLOT

2583 S. Prairie View Road | Chippewa Falls, WI 54729



LAND AVAILABLE

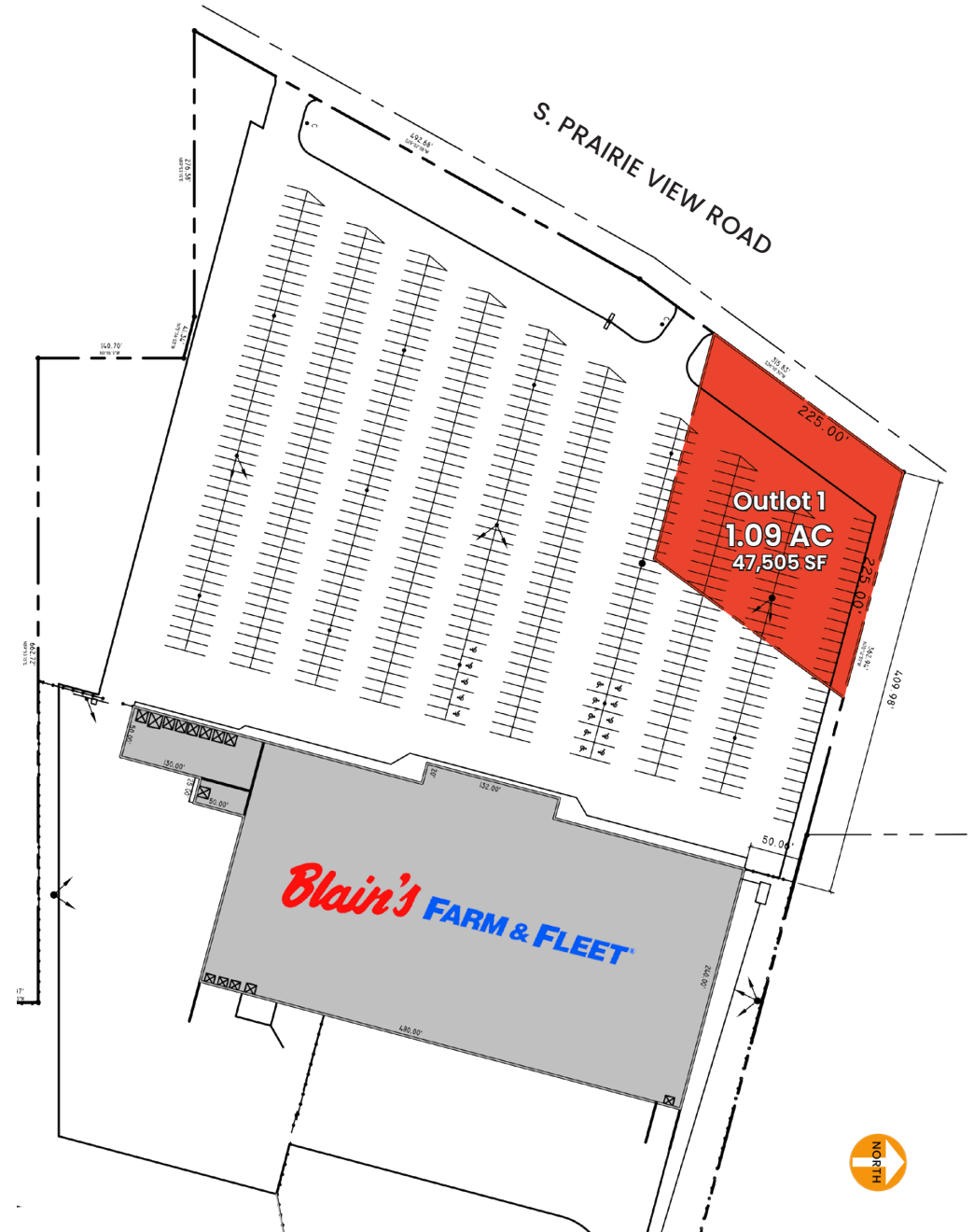
Outlot 1 1.09 AC

SITE SUMMARY

- ±1.09-acre outlot positioned directly at Blain's Farm & Fleet, a major regional retail anchor
- Strong visibility and access along Prairie View Road, a primary commercial corridor
- Growing consumer base in the trade area continues to increase demands for QSR, automotive, medical, and retail concepts in the trade area
- Close proximity to Walmart and the WI-29 interchange

DEMOGRAPHICS

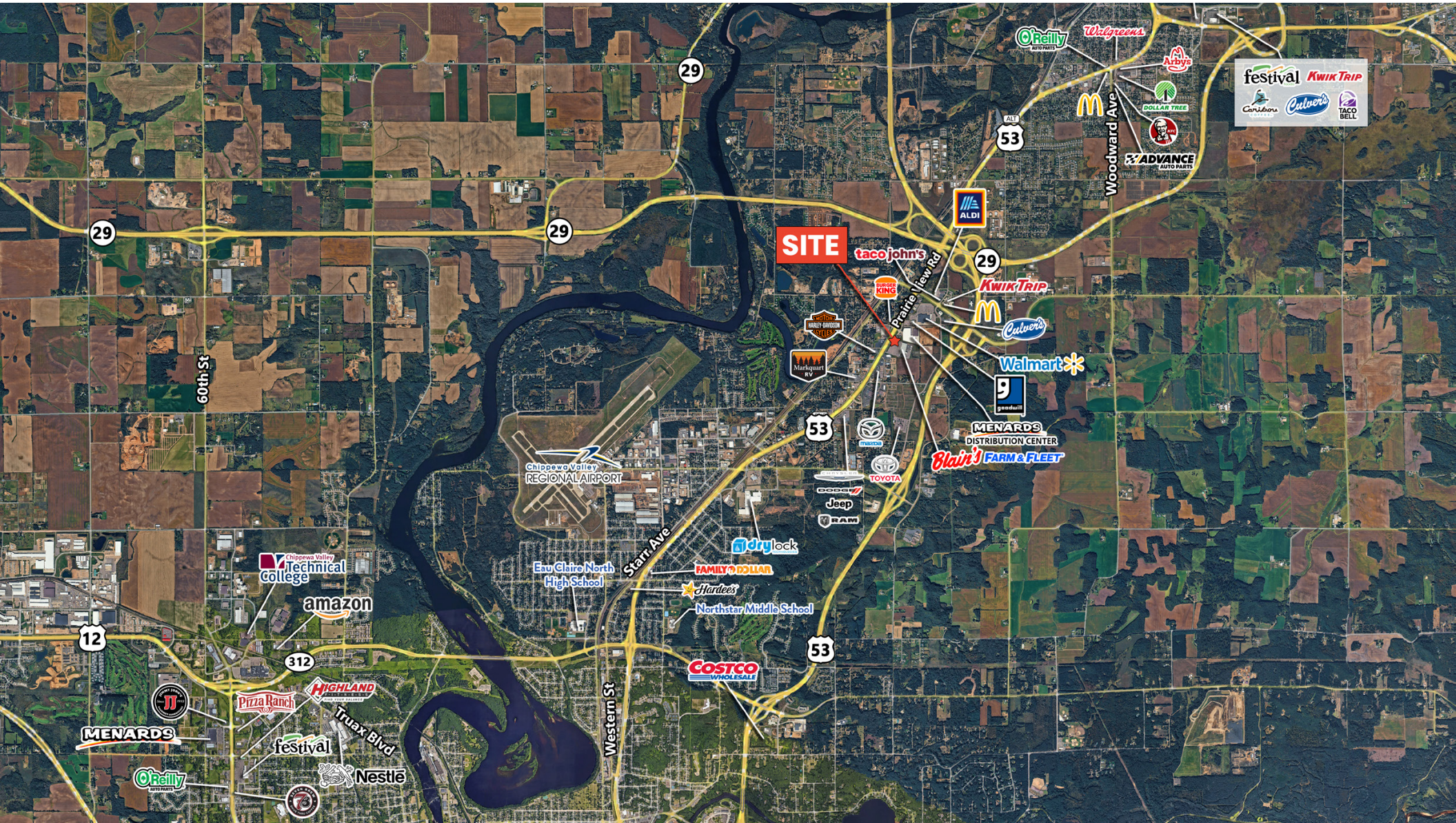
	1 Mile	3 Miles	5 Miles
Total Population	1,179	11,783	39,739
Average HH Income	\$97,487	\$103,986	\$97,328
Total Housing Units	555	4,801	17,367



LAND FOR SALE

BLAIN'S FARM & FLEET OUTLOT

2583 S. Prairie View Road | Chippewa Falls, WI 54729



FOR MORE
INFORMATION,
CONTACT

DANIELLE KLING
danielle@arcgrp.com
630.908.5693

AL RODENBOSTEL
al@arcgrp.com
630.908.5701

ANDY ROBBINS
arobbins@arcgrp.com
630.908.5707

REALTY RESOURCES
MEMBER

The information above has been obtained from sources believed reliable. While we do not doubt its accuracy, we have not verified it and make no guarantee, warranty or representation about it.