

OUTLOT AVAILABLE

BLAIN'S FARM & FLEET OUTLOT

2421 Humes Road | Janesville, WI 53545



OUTLOT AVAILABLE

BLAIN'S FARM & FLEET OUTLOT

2421 Humes Road | Janesville, WI 53545



LAND AVAILABLE

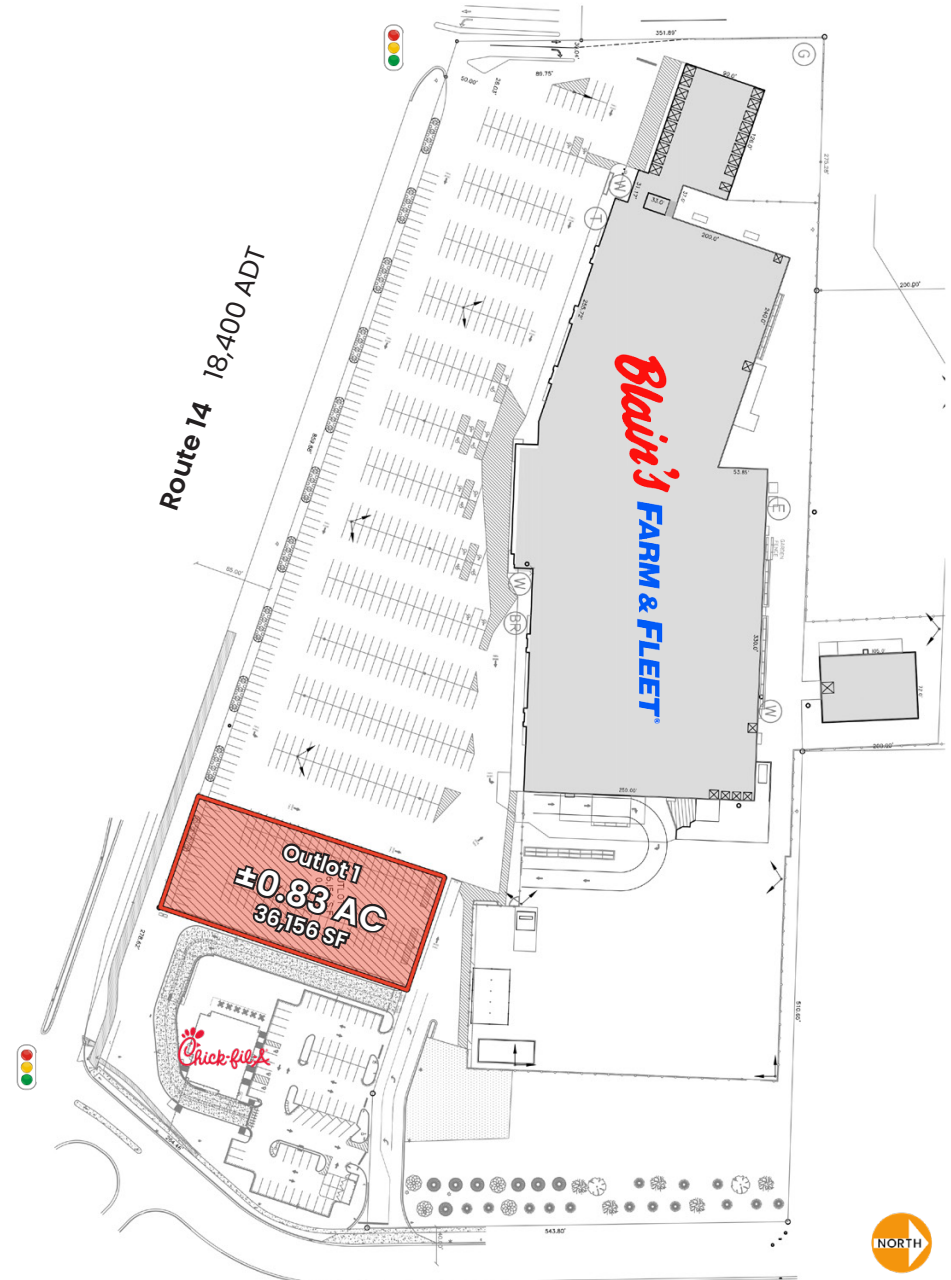
Outlot 1 ±0.83 Acre

SITE SUMMARY

- High-visibility outlot to Blain's Farm & Fleet
- Positioned along Humes Rd (US-14)—a major Janesville commercial corridor
- Strong retail synergy with national and regional co-tenants nearby
- Shadow-anchored by Hy-Vee Grocery Store across the street
- Ideal for QSR, medical, service retail, automotive, or financial users
- Dense residential and daytime population surrounding the site

DEMOGRAPHICS

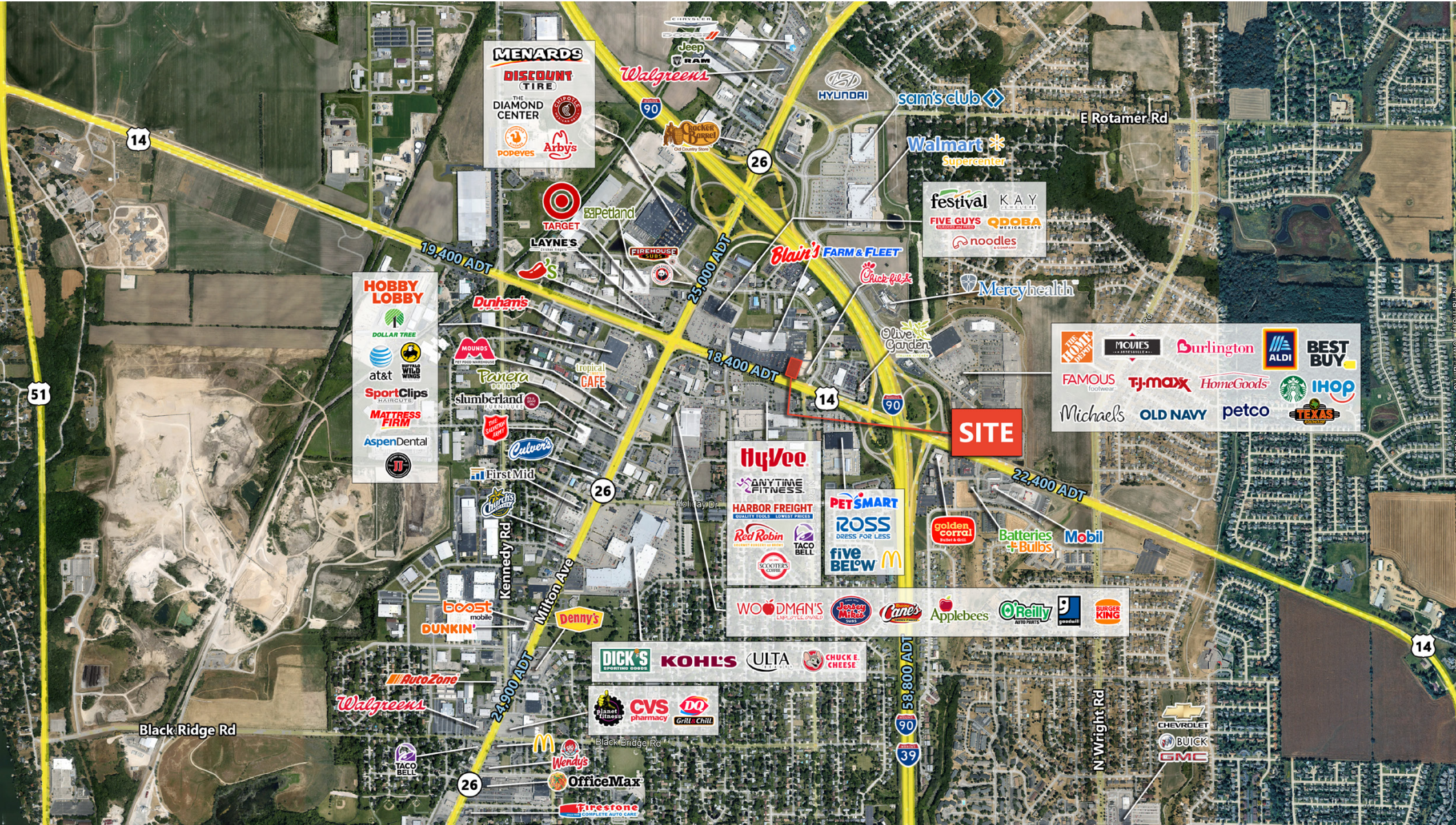
	3 Miles	5 Miles	7 Miles
Total Population	40,410	67,573	79,969
Average HH Income	\$94,286	\$91,404	\$92,617
Total Housing Units	17,866	29,857	35,124



OUTLOT AVAILABLE

BLAIN'S FARM & FLEET OUTLOT

2421 Humes Road | Janesville, WI 53545



FOR MORE
INFORMATION,
CONTACT

DANIELLE KLING
danielle@arcgrp.com
630.908.5693

AL RODENBOSTEL
al@arcgrp.com
630.908.5701

ANDY ROBBINS
arobbins@arcgrp.com
630.908.5707

REALTY RESOURCES
MEMBER

The information above has been obtained from sources believed reliable. While we do not doubt its accuracy, we have not verified it and make no guarantee, warranty or representation about it.