

LAND FOR SALE

BLAIN'S FARM & FLEET OUTLOTS

NWC Highway 17 & Timber Drive | Rhinelander, WI 54501



BLAIN'S FARM & FLEET OUTLOTS

NWC Highway 17 & Timber Drive | Rhinelander, WI 54501



LAND AVAILABLE

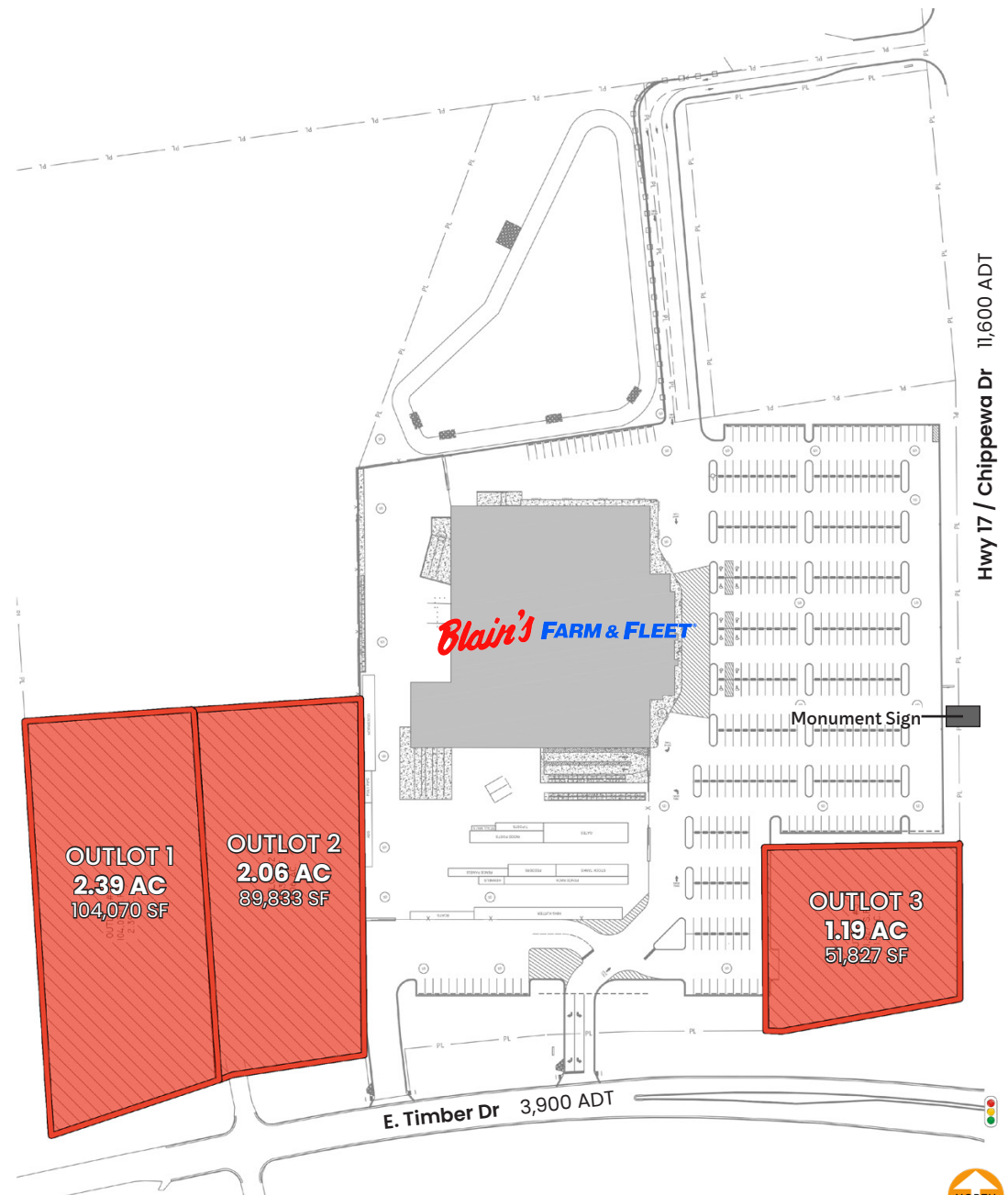
- Outlot 1** 2.13 AC*
 - Outlot 2** 1.99 AC*
 - Outlot 3** 1.09 AC - Corner Lot
- *Can be combined for 4.12 Acres*

SITE SUMMARY

- Rhinelander serves as the dominant retail hub for Oneida County and all of Northern Wisconsin
- Excellent visibility to Highway 17
- Proximate to Walmart at Aspirus Rhinelander Hospital (99 beds and over 1,300 employees)

DEMOGRAPHICS

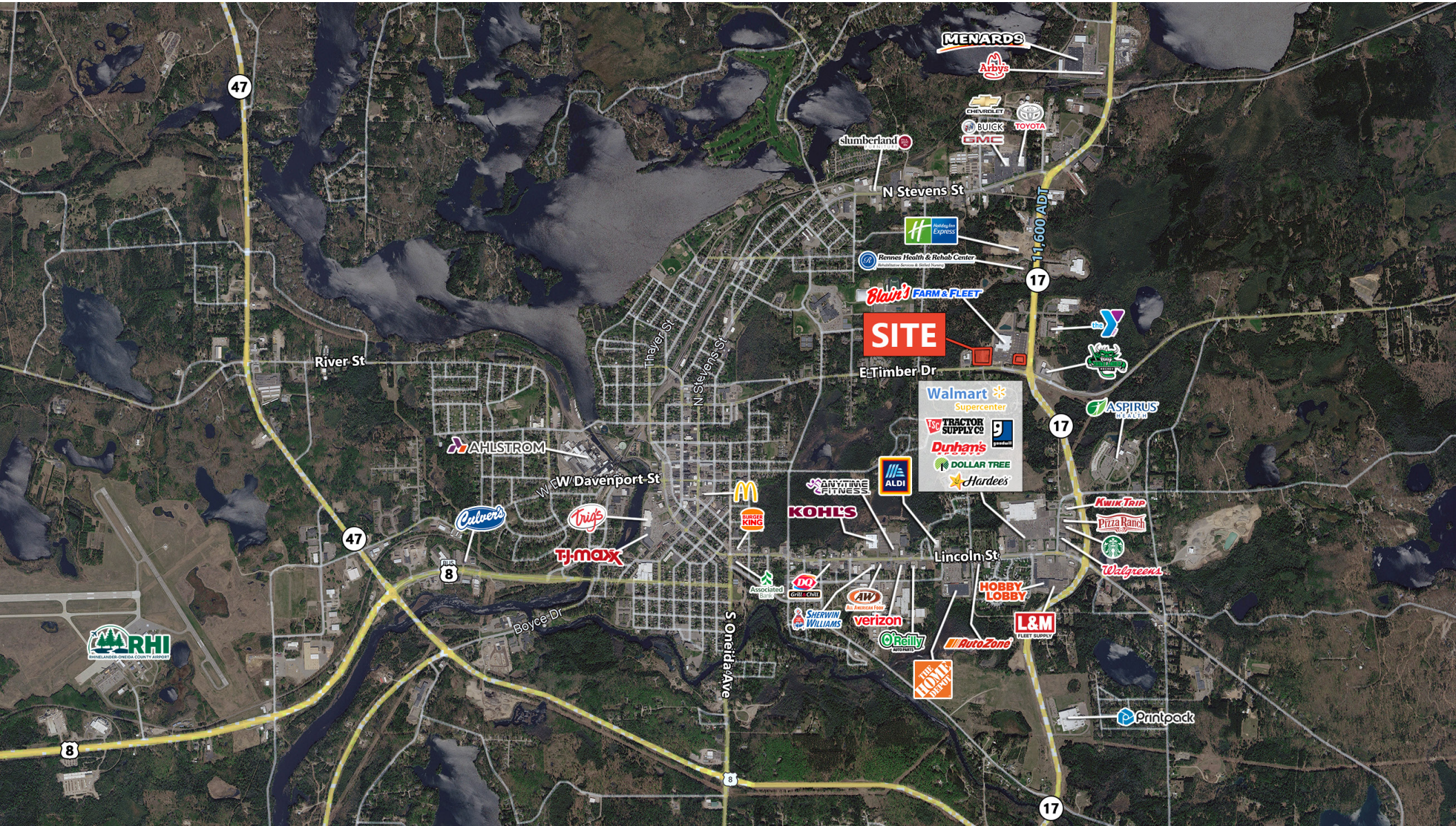
	1 Mile	3 Miles	5 Miles
Total Population	1,603	11,436	14,768
Average HH Income	\$92,014	\$82,014	\$85,963
Total Housing Units	737	5,852	7,978



LAND FOR SALE

BLAIN'S FARM & FLEET OUTLOTS

NWC Highway 17 & Timber Drive | Rhinelander, WI 54501



FOR MORE
INFORMATION,
CONTACT

DANIELLE KLING
danielle@arcgrp.com
630.908.5693

AL RODENBOSTEL
al@arcgrp.com
630.908.5701

ANDY ROBBINS
arobbins@arcgrp.com
630.908.5707



The information above has been obtained from sources believed reliable. While we do not doubt its accuracy, we have not verified it and make no guarantee, warranty or representation about it.