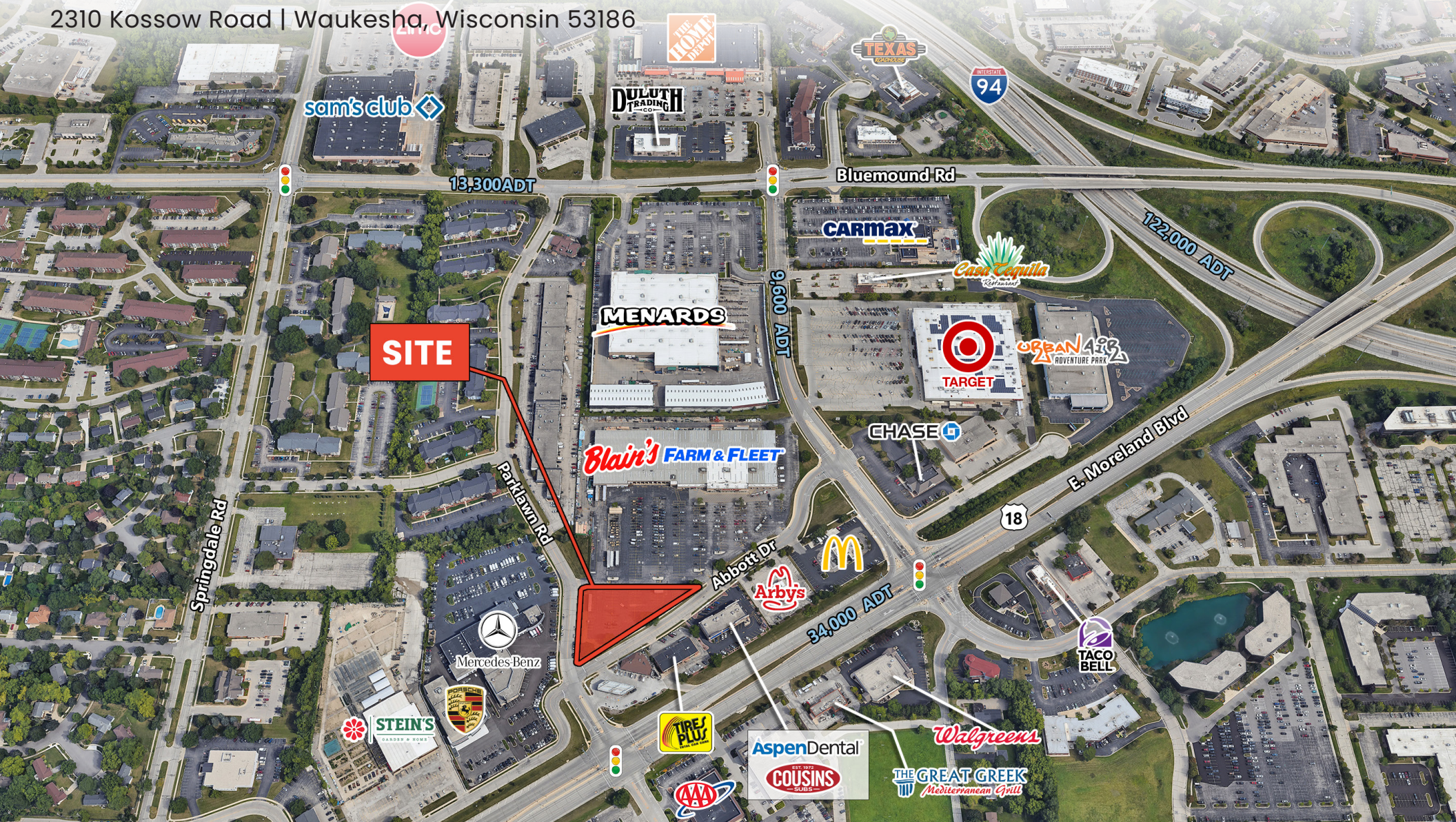


LAND FOR SALE

BLAIN'S FARM & FLEET OUTLOT

2310 Kossow Road | Waukesha, Wisconsin 53186



BLAIN'S FARM & FLEET OUTLOT

2310 Kossow Road | Waukesha, Wisconsin 53186

LAND AVAILABLE

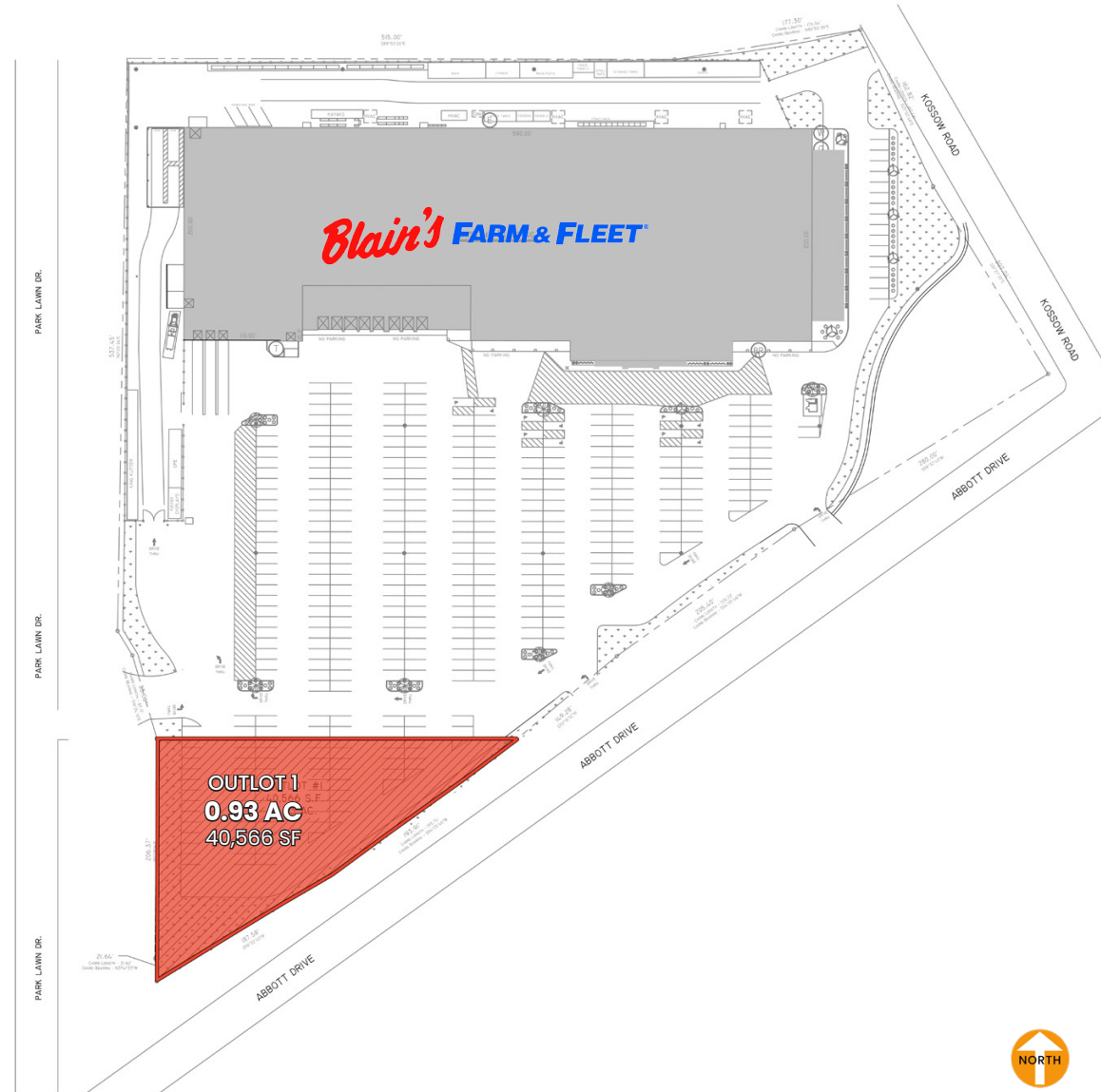
Outlot 5 0.93 AC

SITE SUMMARY

- High visibility with direct frontage on Kossow Road
- Full access via shared drive/Blain's entrance
- Adjacent to Walmart Supercenter, Sam's Club, and Woodman's Food Market
- Near ProHealth Waukesha Memorial Hospital, Carroll University, and Catholic Memorial HS
- Easy access from US-18 / Bluemound Road interchange
- Dense residential trade area drawing from Waukesha, Brookfield, New Berlin, and Pewaukee
- Strong daytime population driven by healthcare, manufacturing, and professional services employers

DEMOGRAPHICS

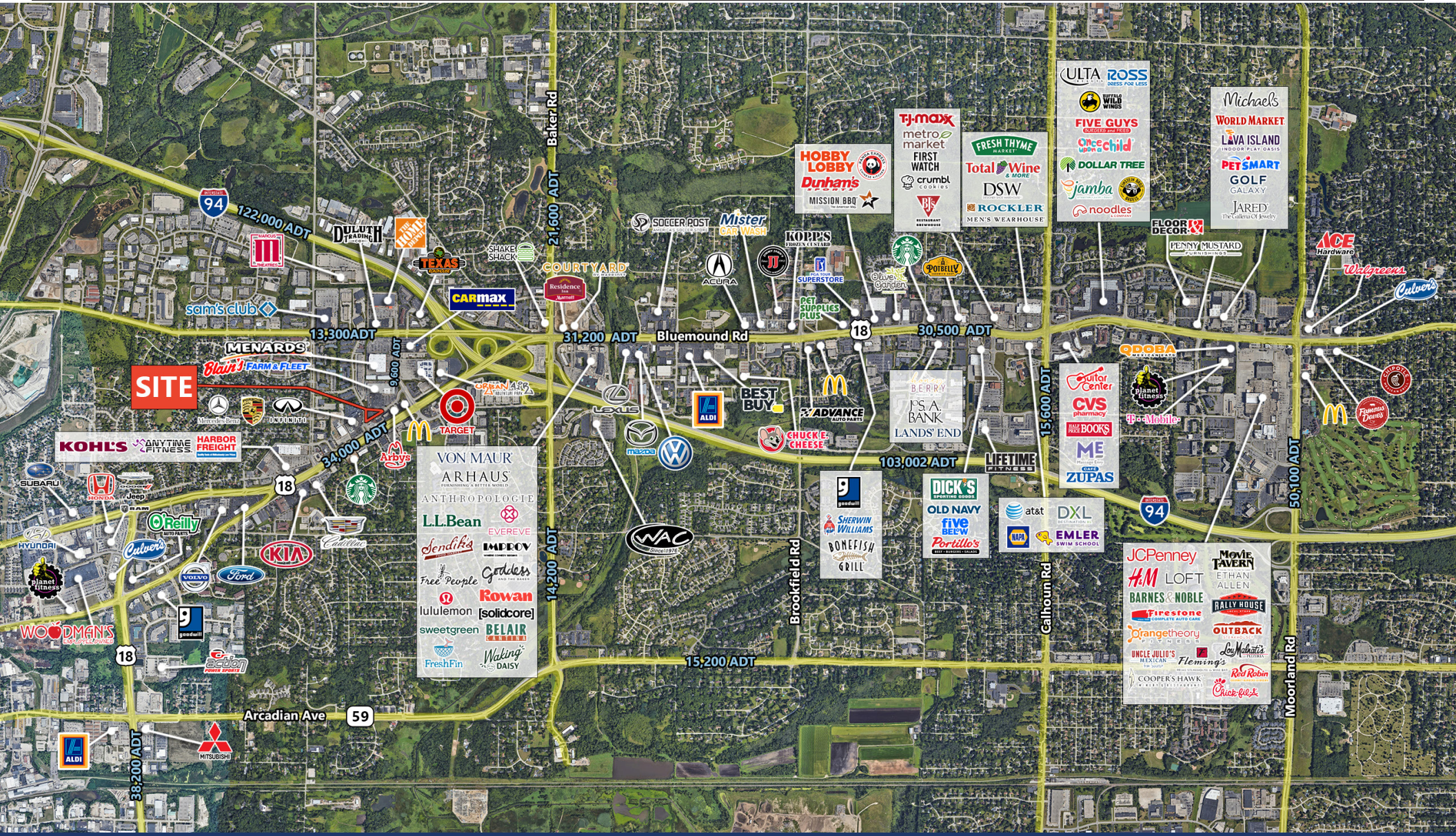
	1 Mile	3 Miles	5 Miles
Total Population	6,877	42,701	123,872
Average HH Income	\$93,475	\$119,067	\$120,956
Total Housing Units	3,445	18,847	53,713



LAND FOR SALE

BLAIN'S FARM & FLEET OUTLOT

2310 Kossow Road | Waukesha, Wisconsin 53186



FOR MORE
INFORMATION,
CONTACT

DANIELLE KLING
danielle@arcgrp.com
630.908.5693

AL RODENBOSTEL
al@arcgrp.com
630.908.5701

ANDY ROBBINS
arobbins@arcgrp.com
630.908.5707

REALTY RESOURCES
MEMBER

The information above has been obtained from sources believed reliable. While we do not doubt its accuracy, we have not verified it and make no guarantee, warranty or representation about it.