

LAND FOR SALE

BLAIN'S FARM & FLEET OUTLOTS

11501 US-14 | Woodstock, Illinois 60098



BLAIN'S FARM & FLEET OUTLOTS

11501 US-14 | Woodstock, Illinois 60098

LAND AVAILABLE

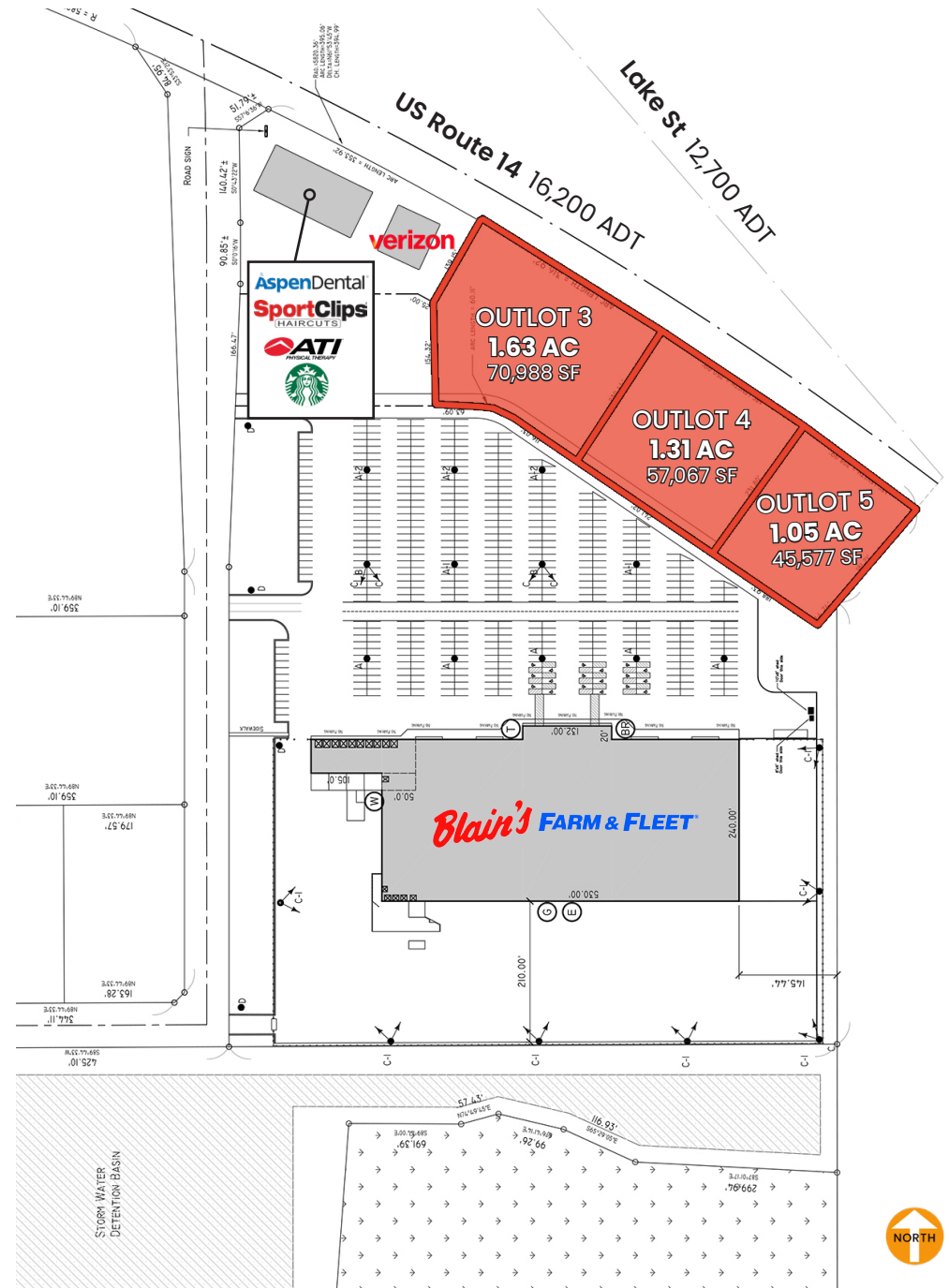
- Outlot 3** 1.63 AC
- Outlot 4** 1.31 AC
- Outlot 5** 1.05 AC

SITE SUMMARY

- Premier outlot positions fronting US Route 14 with over 16,200 vehicles passing daily
- Direct visibility and access from US-14, one of McHenry County's primary commercial corridors
- Join Verizon, Starbucks, and Aspen Dental as neighbor tenants
- Positioned in front of Blain's Farm & Fleet, a high-traffic regional destination drawing customers from Woodstock, Crystal Lake, McHenry, Huntley, and Marengo
- Excellent ingress/egress with strong pylon signage opportunity

DEMOGRAPHICS

	1 Mile	3 Miles	5 Miles
Total Population	2,709	19,437	40,035
Average HH Income	\$101,363	\$109,271	\$122,416
Total Housing Units	1,192	8,526	16,270



LAND FOR SALE

BLAIN'S FARM & FLEET OUTLOTS

11501 US-14 | Woodstock, Illinois 60098



FOR MORE
INFORMATION,
CONTACT

DANIELLE KLING
danielle@arcgrp.com
630.908.5693

AL RODENBOSTEL
al@arcgrp.com
630.908.5701

ANDY ROBBINS
arobbins@arcgrp.com
630.908.5707

REALTY RESOURCES
MEMBER

The information above has been obtained from sources believed reliable. While we do not doubt its accuracy, we have not verified it and make no guarantee, warranty or representation about it.