

LAND FOR SALE

BLAIN'S FARM & FLEET OUTLOT

1400 W. Main Street | Watertown, Wisconsin 53098



BLAIN'S FARM & FLEET OUTLOT

1400 W. Main Street | Watertown, Wisconsin 53098

LAND AVAILABLE

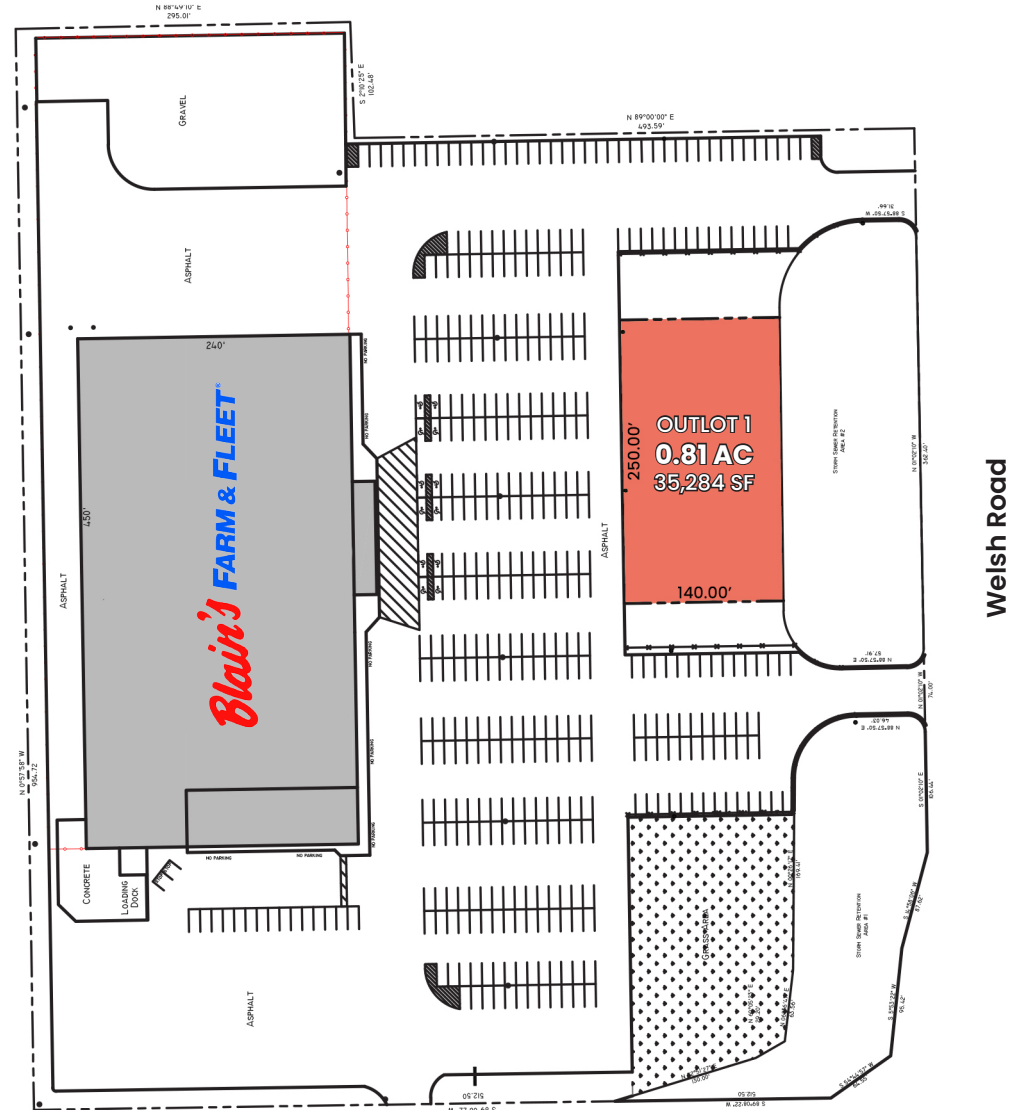
Outlot 1 0.81 AC

SITE SUMMARY

- Direct access via a full access point just to the west on Highway 26, connecting this location to several regional markets beyond Watertown
- Proximate to Madison Area Technical College with over 13,000 students
- Serving the Watertown community and nearby areas including Oconomowoc, Waterloo, Lake Mills, and Jefferson
- Strong anchor tenancy with Blain's Farm & Fleet, a regional destination in operation at this location since 1967

DEMOGRAPHICS

	3 Miles	5 Miles	10 Miles
Total Population	20,293	25,678	40,808
Average HH Income	\$97,827	\$86,099	\$94,863
Daytime Population	16,923	22,346	34,695



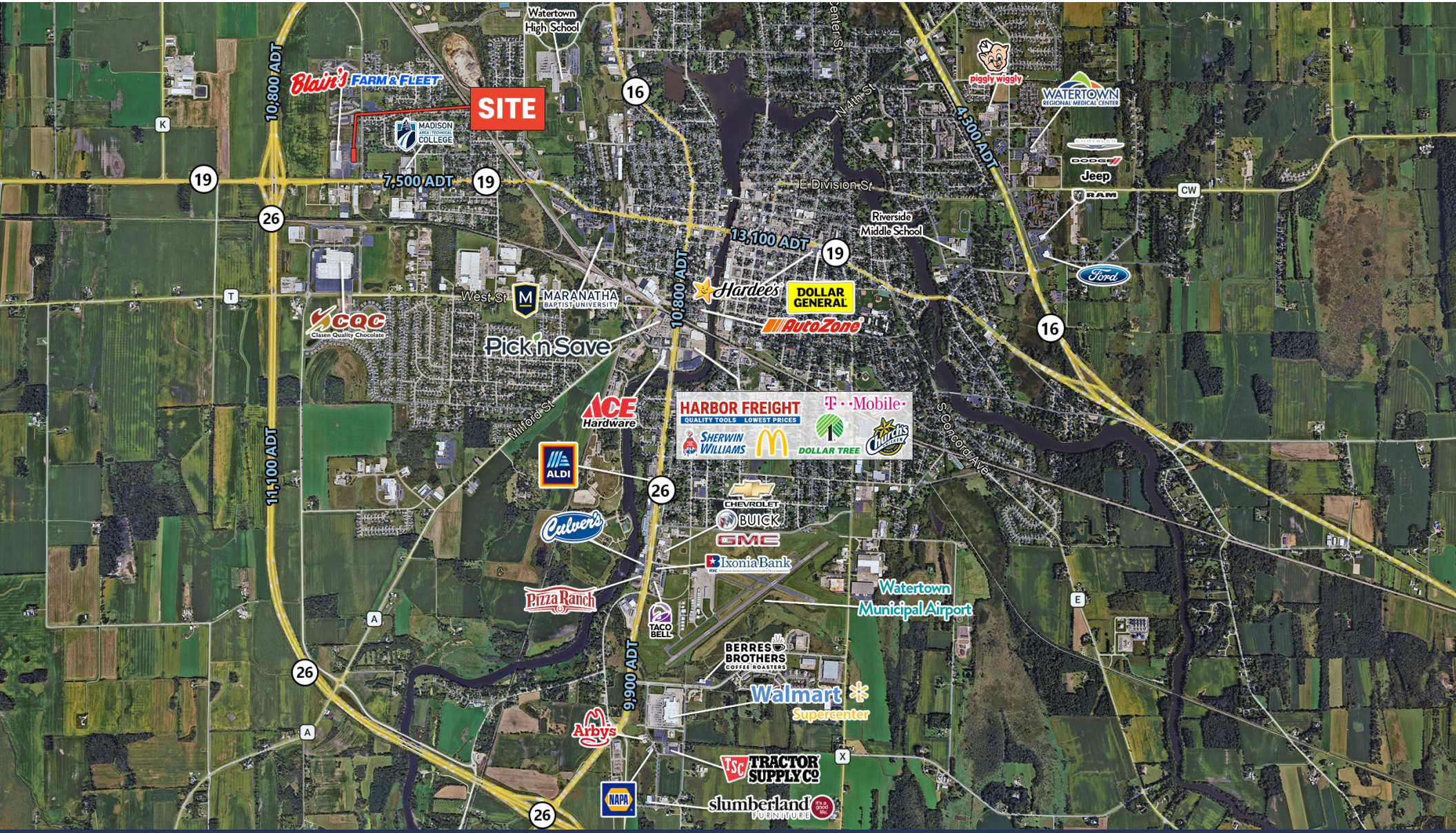
Hwy 19/Main St 7,500 ADT



LAND FOR SALE

BLAIN'S FARM & FLEET OUTLOT

1400 W. Main Street | Watertown, Wisconsin 53098



FOR MORE
INFORMATION,
CONTACT

DANIELLE KLING
danielle@arcgrp.com
630.908.5693

AL RODENBOSTEL
al@arcgrp.com
630.908.5701

ANDY ROBBINS
arobbins@arcgrp.com
630.908.5707

REALTY RESOURCES
MEMBER

The information above has been obtained from sources believed reliable. While we do not doubt its accuracy, we have not verified it and make no guarantee, warranty or representation about it.