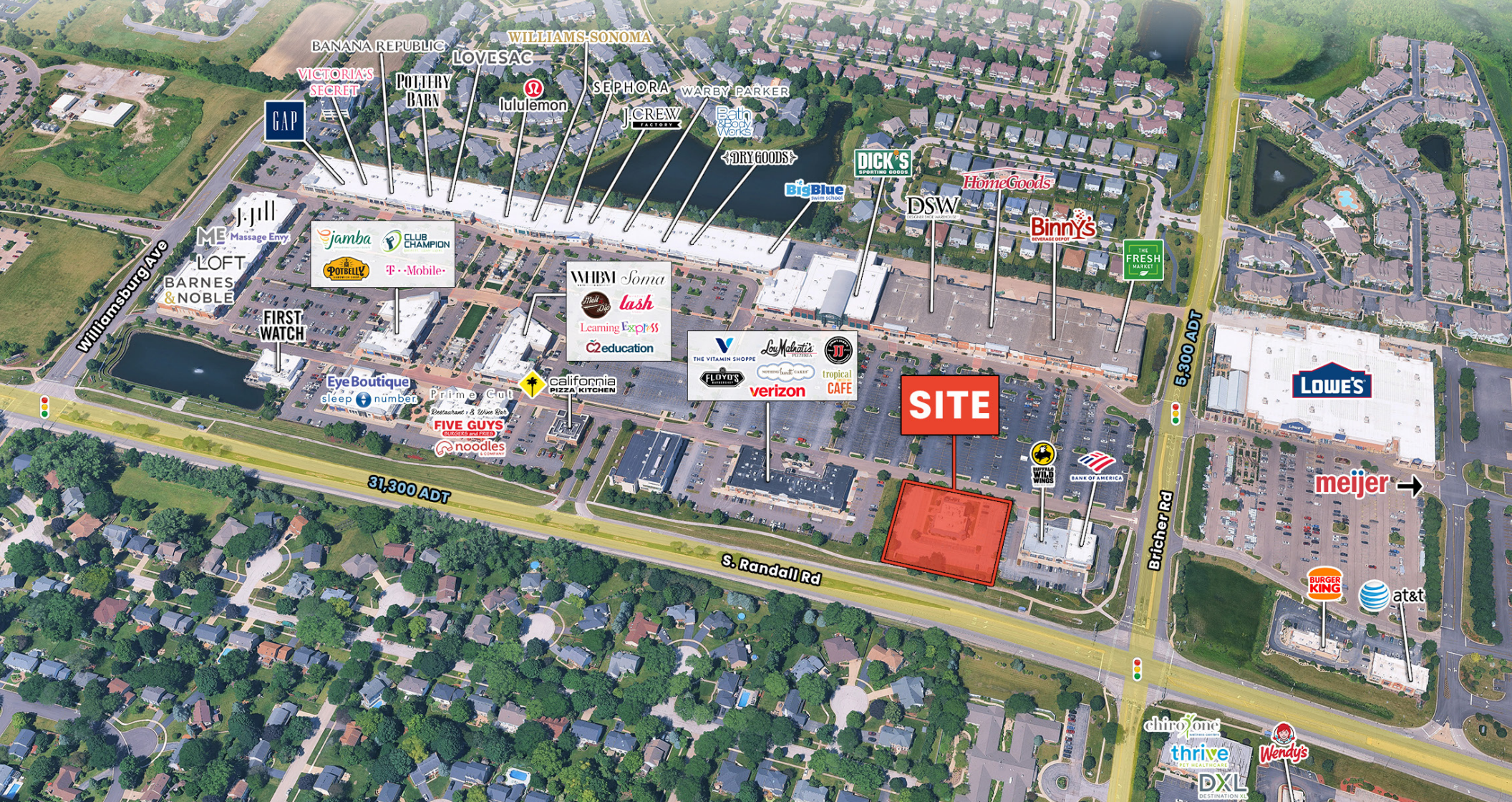


HIGH-VISIBILITY OUTLOT ON RANDALL ROAD | GENEVA COMMONS

902 COMMONS DRIVE

Geneva, Illinois 60134



902 COMMONS DRIVE

Geneva, Illinois 60134



SPACE AVAILABLE

2,669 SF

PROPERTY HIGHLIGHTS

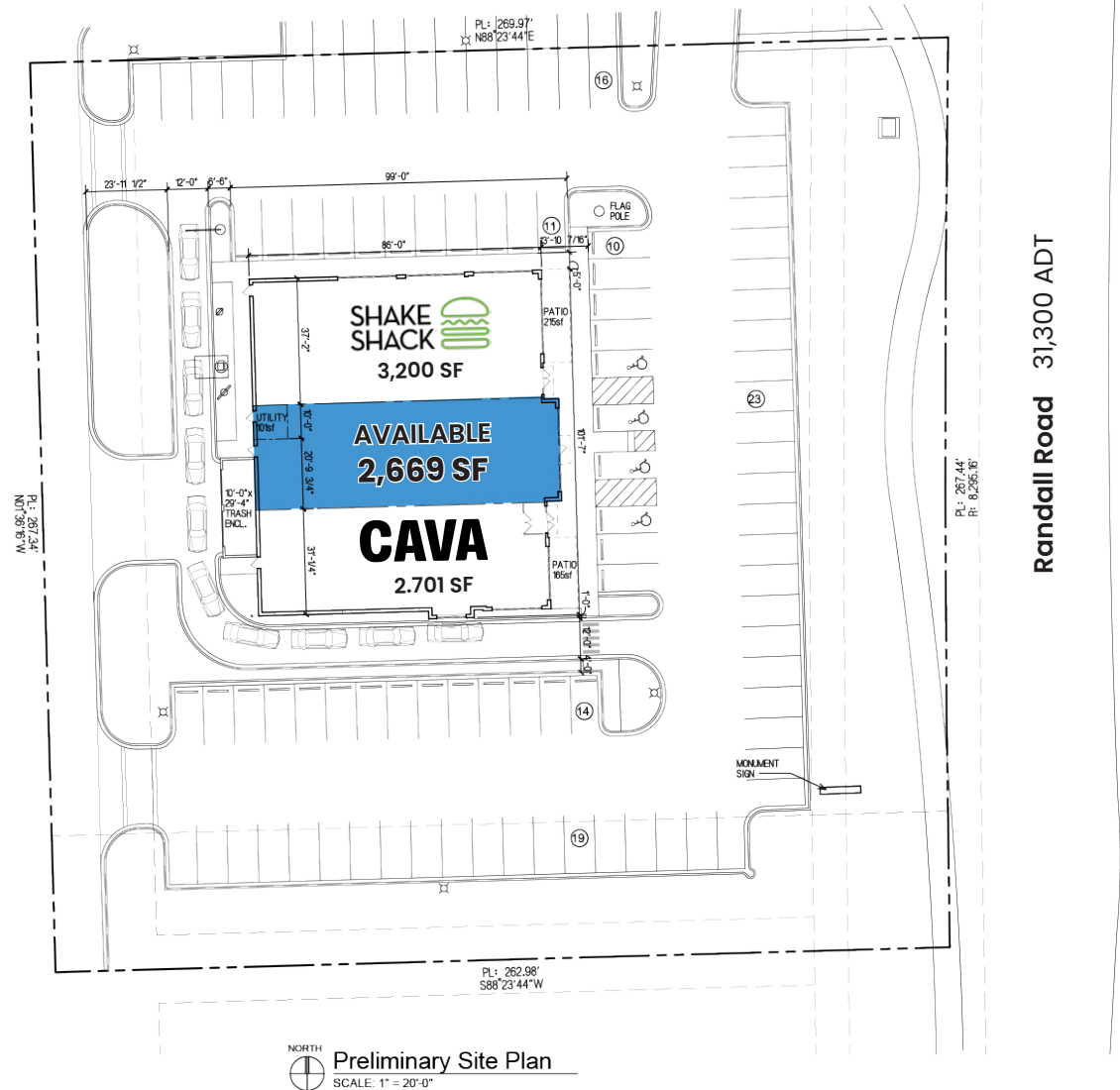
- Front-and-center exposure on Randall Road, with 31,300 vehicles passing daily
- Directly linked to the 440,000 SF Geneva Commons lifestyle center, which draws 4.8 million customer visits annually
- Sits in the core of the Randall Road retail corridor — a roughly 2.5 million SF shopping destination stretching from Batavia to St. Charles
- Neighbors Northwestern Medicine Delnor Hospital, a 159-bed facility with 600+ physicians across 64 specialties

ADDITIONAL NEIGHBORING TENANTS



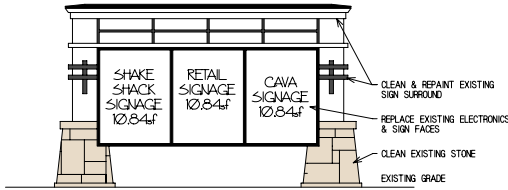
DEMOGRAPHICS

	1 MILE	3 MILES	5 MILES
Total Population	10,735	54,156	102,670
Average HH Income	\$146,447	\$158,637	\$165,365
Daytime Population	16,227	61,356	126,097



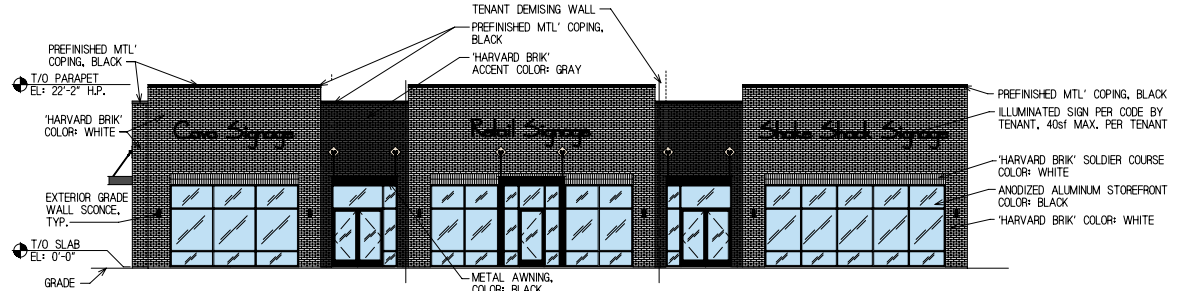
902 COMMONS DRIVE

Geneva, Illinois 60134



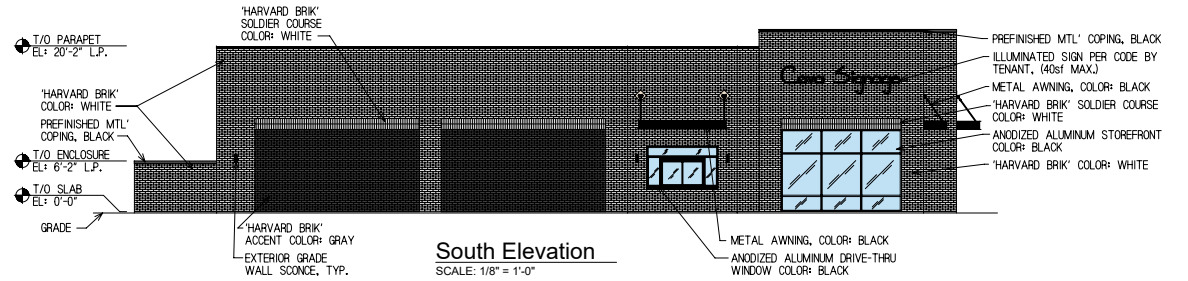
Monument Sign

SCALE: 3/8" = 1'-0"



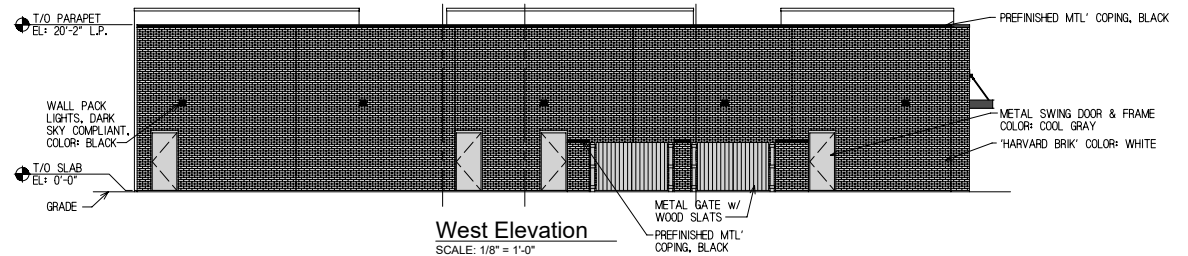
East Elevation

SCALE: 1/8" = 1'-0"



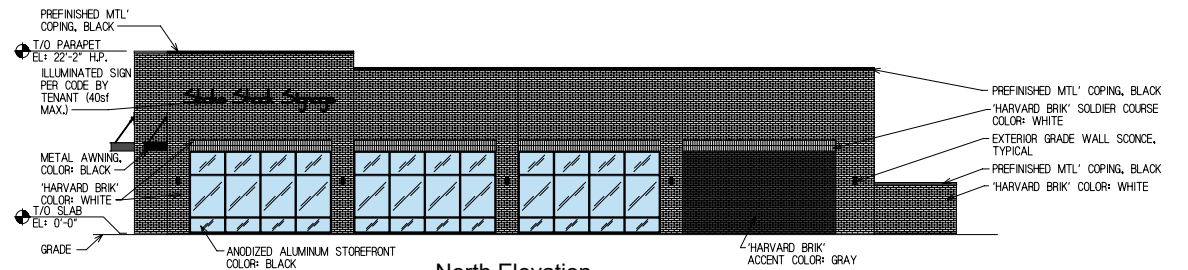
South Elevation

SCALE: 1/8" = 1'-0"



West Elevation

SCALE: 1/8" = 1'-0"

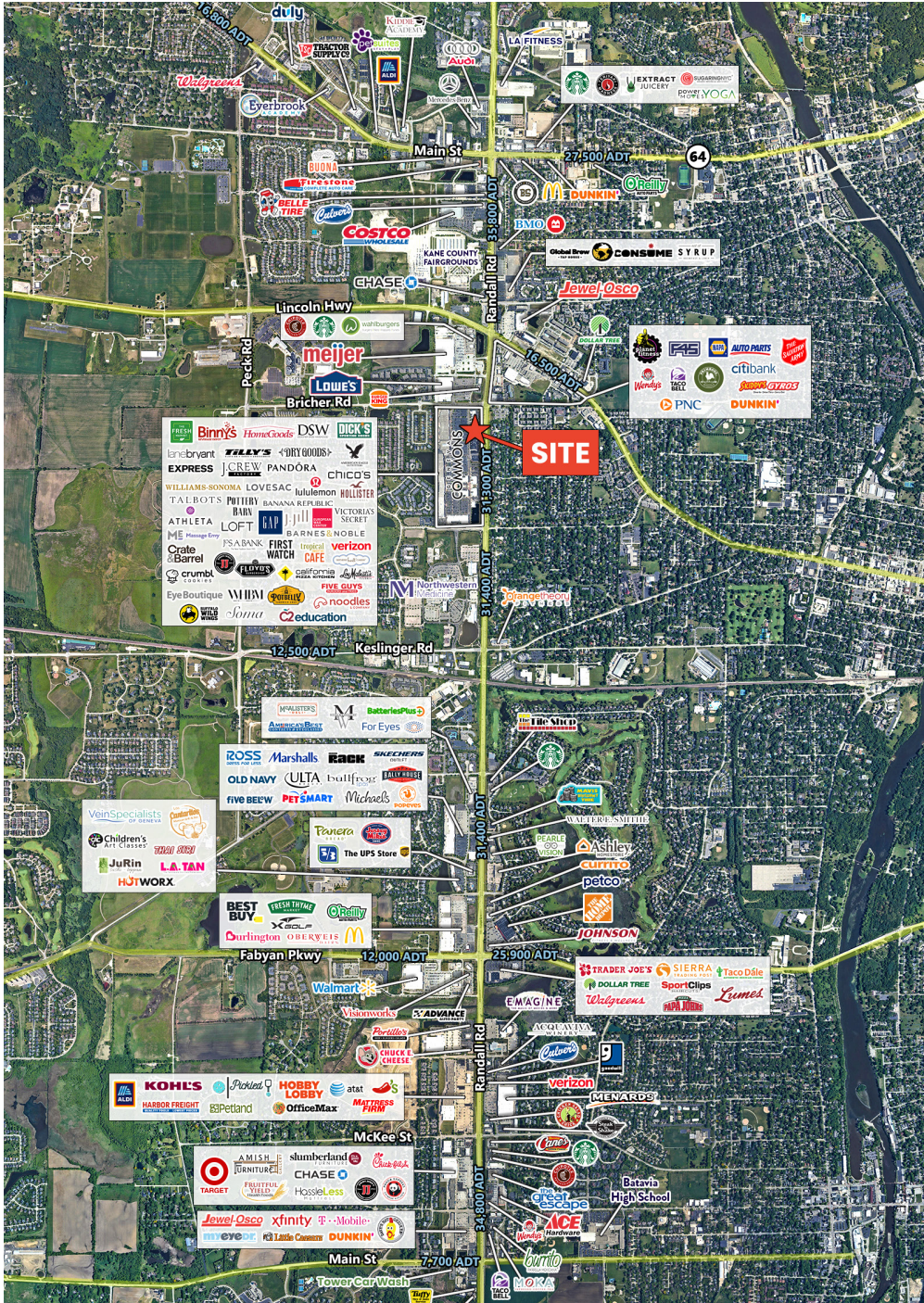


North Elevation

SCALE: 1/8" = 1'-0"

902 COMMONS DRIVE

Geneva, Illinois 60134



FOR MORE INFORMATION,
CONTACT

LAUREN SZYMELL

lszymell@arcgrp.com

630.908.5703

JEANNE ELLIOTT

jeanne@arcgrp.com

630.908.5696

